

LAMP1 Antibody (N-term)

Peptide Affinity Purified Rabbit Polyclonal Antibody (Pab)
Catalog # AP1823a-400 □

Specification

LAMP1 Antibody (N-term) - Product info

Application	IHC-P, WB
Primary Accession	P11279
Reactivity	Human, Mouse
Host	Rabbit
Clonality	Polyclonal
Isotype	Rabbit Ig

LAMP1 Antibody (N-term) - Additional info

Gene ID 3916

Other Names

Lysosome-associated membrane glycoprotein 1, LAMP-1,
Lysosome-associated membrane protein 1, CD107 antigen-like
family member A, CD107a, LAMP1

Target/Specificity

This LAMP1 antibody is generated from rabbits immunized with a KLH conjugated synthetic peptide between 125-154 amino acids from the N-terminal region of human LAMP1.

Dilution

WB~~1:1000
IHC-P~~1:10~50

Format

Purified polyclonal antibody supplied in PBS with 0.09% (W/V) sodium azide. This antibody is purified through a protein A column, followed by peptide affinity purification.

Storage

Maintain refrigerated at 2-8°C for up to 2 weeks. For long term storage store at -20°C in small aliquots to prevent freeze-thaw cycles.

Precautions

LAMP1 Antibody (N-term) is for research use only and not for use in diagnostic or therapeutic procedures.

LAMP1 Antibody (N-term) - Protein Information

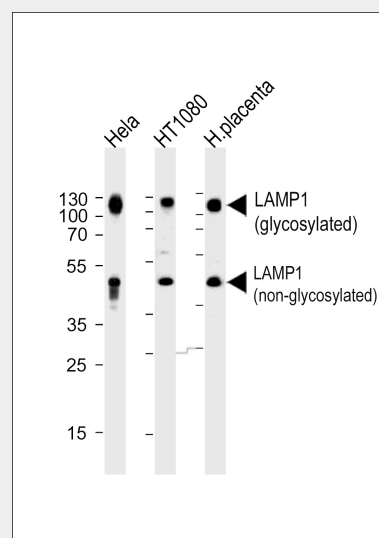
Name LAMP1

Function

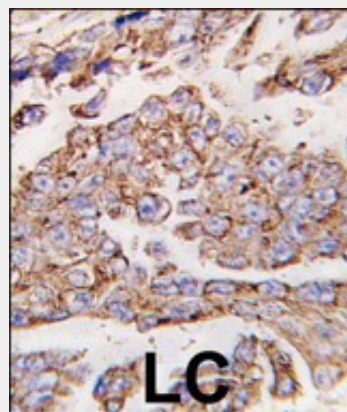
Presents carbohydrate ligands to selectins. Also implicated in tumor cell metastasis.

Cellular Location

Cell membrane {ECO:0000250|UniProtKB:P05300}; Single-pass type I membrane protein. Endosome membrane; Single-pass type I membrane protein. Lysosome membrane; Single-pass



Western blot analysis of lysates from HeLa, HT1080 cell line and human placenta tissue (from left to right), using LAMP1 Antibody (N-term) (Cat. #AP1823a). AP1823a was diluted at 1:1000 at each lane. A goat anti-rabbit IgG H&L (HRP) at 1:5000 dilution was used as the secondary antibody. Lysates at 35ug per lane.



Formalin-fixed and paraffin-embedded human lung carcinoma tissue reacted with *LAMP1 antibody (N-term) (Cat.#AP1823a), which was peroxidase-conjugated to the secondary antibody, followed by DAB staining. This data demonstrates the use of this antibody for immunohistochemistry; clinical relevance has not been evaluated.

type I membrane protein. Late endosome. Note=This protein shuttles between lysosomes, endosomes, and the plasma membrane (By similarity) Colocalizes with OSBPL1A at the late endosome (PubMed:16176980)
{ECO:0000250|UniProtKB:P05300,
ECO:0000269|PubMed:16176980,
ECO:0000269|PubMed:17897319}

LAMP1 Antibody (N-term) - Protocols

Provided below are standard protocols that you may find useful for product applications.

- [□Western Blot](#)
- [□Blocking Peptides](#)
- [□Dot Blot](#)
- [□Immunohistochemistry](#)
- [□Immunofluorescence](#)
- [□Immunoprecipitation](#)
- [□Flow Cytometry](#)
- [□Cell Culture](#)

LAMP1 Antibody (N-term) - Background

LAMP1 is a member of a family of membrane glycoproteins. This glycoprotein provides selectins with carbohydrate ligands. It may also play a role in tumor cell metastasis.

LAMP1 Antibody (N-term) - References

References for protein: 1.Fukuda M., J. Biol. Chem. 263:18920-18928(1988). 2.Sawada R., J. Biol. Chem. 268:9014-9022(1993). References for U251 cell line: 1. Westermark B.; Pontén J.; Hugosson R. (1973). "Determinants for the establishment of permanent tissue culture lines from human gliomas". Acta Pathol Microbiol Scand A. 81:791-805. [PMID: 4359449]. 2. Pontén, J.,Westermark B. (1978). "Properties of Human Malignant Glioma Cells in Vitro". Medical Biology 56: 184-193.[PMID: 359950]. 3. Geng Y.;Kohli L.; Klocke B.J.; Roth K.A.(2010). "Chloroquine-induced autophagic vacuole accumulation and cell death in glioma cells is p53 independent". Neuro Oncol. 12(5): 473-481.[PMID: 20406898].

LAMP1 Antibody (N-term) - Citations

- [The role of lysosomes and autophagosomes in Frontotemporal Lobar Degeneration.](#)
- [A rapid method to improve protein detection by indirect ELISA.](#)
- [Involvement of autophagy in oncogenic K-Ras-induced malignant cell transformation.](#)
- [Granulovacuolar degeneration \(GVD\) bodies of Alzheimer's disease \(AD\) resemble late-stage autophagic organelles.](#)
- [The Rac1/MKK7/JNK pathway signals upregulation of Atg5 and subsequent autophagic cell death in response to oncogenic Ras.](#)