

CHML Antibody (C-term)

Purified Rabbit Polyclonal Antibody (Pab)
Catalog # AP20592c-400 □

Specification

CHML Antibody (C-term) - Product info

| | |
|-------------------|------------------------|
| Application | WB, FC, IHC-P |
| Primary Accession | P26374 |
| Reactivity | Human |
| Host | Rabbit |
| Clonality | Polyclonal |
| Isotype | Rabbit Ig |
| Clone Names | RB47985 |
| Calculated MW | 74071 |

CHML Antibody (C-term) - Additional info

Gene ID 1122

Other Names

Rab proteins geranylgeranyltransferase component A 2, Choroideremia-like protein, Rab escort protein 2, REP-2, CHML, REP2

Target/Specificity

This CHML antibody is generated from a rabbit immunized with a KLH conjugated synthetic peptide between 624-656 amino acids from the C-terminal region of human CHML.

Dilution

FC~~1:25
IHC-P~~1:25
WB~~1:1000

Format

Purified polyclonal antibody supplied in PBS with 0.09% (W/V) sodium azide. This antibody is purified through a protein A column, followed by peptide affinity purification.

Storage

Maintain refrigerated at 2-8°C for up to 2 weeks. For long term storage store at -20°C in small aliquots to prevent freeze-thaw cycles.

Precautions

CHML Antibody (C-term) is for research use only and not for use in diagnostic or therapeutic procedures.

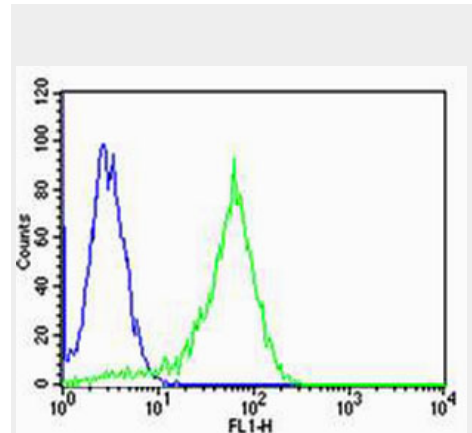
CHML Antibody (C-term) - Protein Information

Name CHML

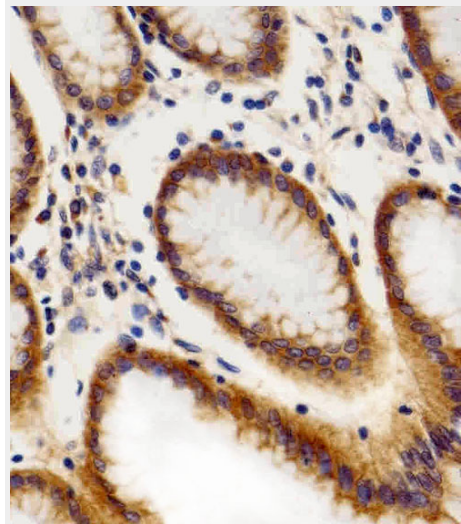
Synonyms REP2

Function

Substrate-binding subunit (component A) of the Rab geranylgeranyltransferase (GGTase) complex. Binds



Flow cytometric analysis of HeLa cells using CHML Antibody (C-term)(green, Cat#AP20592c) compared to an isotype control of rabbit IgG(blue). AP20592c was diluted at 1:25 dilution. An Alexa Fluor® 488 goat anti-rabbit IgG at 1:400 dilution was used as the secondary antibody.



Immunohistochemical analysis of paraffin-embedded H. stomach section using CHML Antibody (C-term)(Cat#AP20592c). AP20592c was diluted at 1:100 dilution. A peroxidase-conjugated goat anti-rabbit IgG at 1:400 dilution was used as the secondary antibody, followed by DAB staining.

unprenylated Rab proteins and presents the substrate peptide to the catalytic component B. The component A is thought to be regenerated by transferring its prenylated Rab back to the donor membrane. Less effective than CHM in supporting prenylation of Rab3 family.

Cellular Location
Cytoplasm, cytosol

CHML Antibody (C-term) - Protocols

Provided below are standard protocols that you may find useful for product applications.

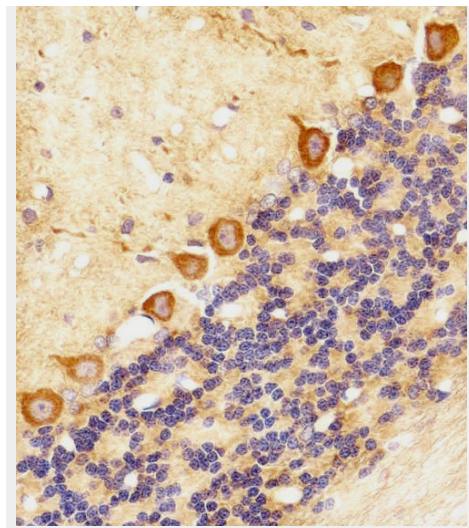
- [□ Western Blot](#)
- [□ Blocking Peptides](#)
- [□ Dot Blot](#)
- [□ Immunohistochemistry](#)
- [□ Immunofluorescence](#)
- [□ Immunoprecipitation](#)
- [□ Flow Cytometry](#)
- [□ Cell Culture](#)

CHML Antibody (C-term) - Background

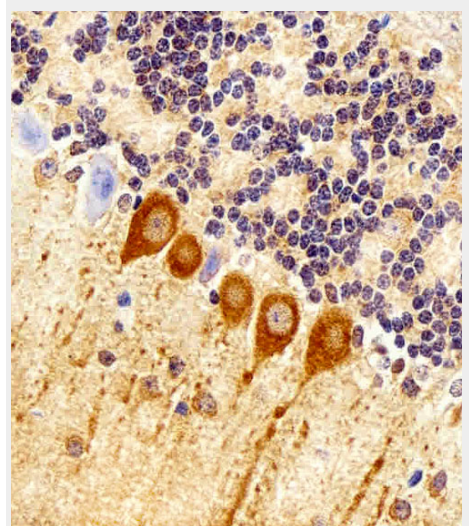
Substrate-binding subunit (component A) of the Rab geranylgeranyltransferase (GGTase) complex. Binds unprenylated Rab proteins and presents the substrate peptide to the catalytic component B. The component A is thought to be regenerated by transferring its prenylated Rab back to the donor membrane. Less effective than CHM in supporting prenylation of Rab3 family.

CHML Antibody (C-term) - References

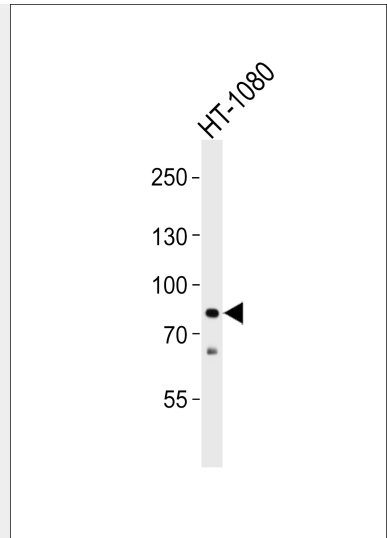
Cremers F.P.M., et al. Hum. Mol. Genet. 1:71-75(1992). Kasper G., et al. Gene 295:27-32(2002). Ota T., et al. Nat. Genet. 36:40-45(2004). Gregory S.G., et al. Nature 441:315-321(2006). Mural R.J., et al. Submitted (JUL-2005) to the EMBL/GenBank/DDBJ databases.



Immunohistochemical analysis of paraffin-embedded R. cerebellum section using CHML Antibody (C-term)(Cat#AP20592c). AP20592c was diluted at 1:100 dilution. A peroxidase-conjugated goat anti-rabbit IgG at 1:400 dilution was used as the secondary antibody, followed by DAB staining.



Immunohistochemical analysis of paraffin-embedded M. cerebellum section using CHML Antibody (C-term)(Cat#AP20592c). AP20592c was diluted at 1:100 dilution. A peroxidase-conjugated goat anti-rabbit IgG at 1:400 dilution was used as the secondary antibody, followed by DAB staining.



Western blot analysis of lysate from HT-1080 cell line, using CHML Antibody (C-term) (Cat. #AP20592c). AP20592c was diluted at 1:1000. A goat anti-rabbit IgG H&L(HRP) at 1:5000 dilution was used as the secondary antibody. Lysate at 35ug.