

## Phospho-AMOT(S1041) Antibody

Peptide Affinity Purified Rabbit Polyclonal Antibody (Pab)  
Catalog # AP3776a-400 □

### Specification

#### Phospho-AMOT(S1041) Antibody - Product info

Application	DB
Primary Accession	<a href="#">Q4VCS5</a>
Other Accession	<a href="#">NP_001106962.1</a>
Reactivity	Human
Host	Rabbit
Clonality	Polyclonal
Isotype	Rabbit Ig
Clone Names	RB40428
Calculated MW	118085

#### Phospho-AMOT(S1041) Antibody - Additional info

Gene ID 154796

#### Other Names

Angiomotin, AMOT, KIAA1071

#### Target/Specificity

This AMOT Antibody is generated from rabbits immunized with a KLH conjugated synthetic phosphopeptide corresponding to amino acid residues surrounding S1041 of human AMOT.

#### Dilution

DB~~1:500

#### Format

Purified polyclonal antibody supplied in PBS with 0.09% (W/V) sodium azide. This antibody is purified through a protein A column, followed by peptide affinity purification.

#### Storage

Maintain refrigerated at 2-8°C for up to 2 weeks. For long term storage store at -20°C in small aliquots to prevent freeze-thaw cycles.

#### Precautions

Phospho-AMOT(S1041) Antibody is for research use only and not for use in diagnostic or therapeutic procedures.

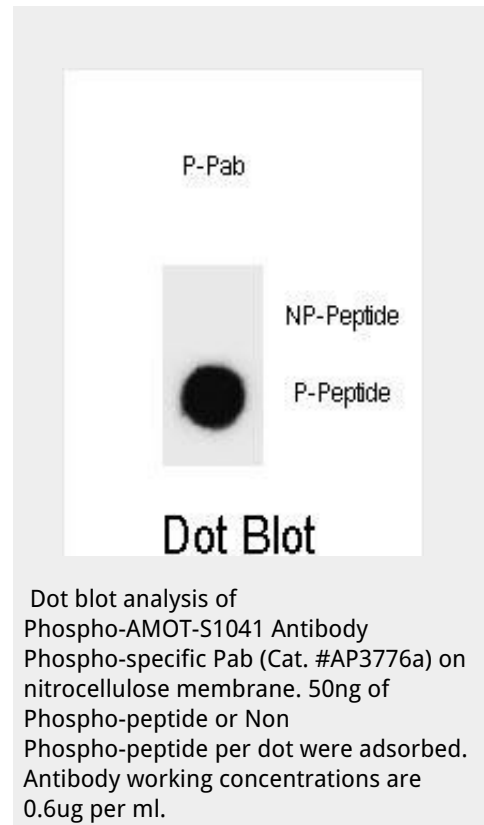
#### Phospho-AMOT(S1041) Antibody - Protein Information

Name AMOT

Synonyms KIAA1071

#### Function

Plays a central role in tight junction maintenance via the complex formed with ARHGAP17, which acts by regulating the uptake of polarity proteins at tight junctions. Appears to regulate endothelial cell migration and tube formation. May also play a role in the assembly of endothelial cell-cell



junctions.

#### Cellular Location

Cell junction, tight junction. Note=Localized on the cell surface  
May act as a transmembrane protein

#### Tissue Location

Expressed in placenta and skeletal muscle. Found in the endothelial cells of capillaries as well as larger vessels of the placenta.

### Phospho-AMOT(S1041) Antibody - Protocols

Provided below are standard protocols that you may find useful for product applications.

- [Western Blot](#)
- [Blocking Peptides](#)
- [Dot Blot](#)
- [Immunohistochemistry](#)
- [Immunofluorescence](#)
- [Immunoprecipitation](#)
- [Flow Cytometry](#)
- [Cell Culture](#)

### Phospho-AMOT(S1041) Antibody - Background

This gene belongs to the motin family of angiostatin binding proteins characterized by conserved coiled-coil domains and C-terminal PDZ binding motifs. The encoded protein is expressed predominantly in endothelial cells of capillaries as well as larger vessels of the placenta where it may mediate the inhibitory effect of angiostatin on tube formation and the migration of endothelial cells toward growth factors during the formation of new blood vessels. Alternative splicing results in multiple transcript variants encoding different isoforms.

### Phospho-AMOT(S1041) Antibody - References

Bailey, S.D., et al. *Diabetes Care* 33(10):2250-2253(2010) Heller, B., et al. *J. Biol. Chem.* 285(16):12308-12320(2010) Talmud, P.J., et al. *Am. J. Hum. Genet.* 85(5):628-642(2009) Gagne, V., et al. *Cell Motil. Cytoskeleton* 66(9):754-768(2009) Zheng, Y., et al. *Circ. Res.* 105(3):260-270(2009)