

Rabbit Anti-E2F5 Polyclonal Antibody
Purified Rabbit Polyclonal Antibody (Pab)
Catalog # AP52267-100 □

Specification

Rabbit Anti-E2F5 Polyclonal Antibody - Product info

Application	WB, IF, IHC-P
Primary Accession	Q15329
Reactivity	Human, Mouse, Rat
Host	Rabbit
Clonality	Polyclonal

Rabbit Anti-E2F5 Polyclonal Antibody - Additional info

Gene ID 1875

Other Names

E2F-5; Transcription factor E2F5; E2F5

Dilution

IHC-P~~1:100~1:500
FC~~1:20~1:100

Format

0.01M TBS(pH7.4) with 1% BSA, 0.03% Proclin300 and 50% Glyce

Storage

Store at -20 °C for one year. Avoid repeated freeze/thaw cycles. When reconstituted in sterile pH 7.4 0.01M PBS or diluent of antibody the antibody is stable for at least two weeks at 2-4 °C.

Rabbit Anti-E2F5 Polyclonal Antibody - Protein Information

Name E2F5

Function

Transcriptional activator that binds to E2F sites, these sites are present in the promoter of many genes whose products are involved in cell proliferation. May mediate growth factor-initiated signal transduction. It is likely involved in the early responses of resting cells to growth factor stimulation. Specifically required for multiciliate cell differentiation: together with MCIDAS and E2F5, binds and activate genes required for centriole biogenesis.

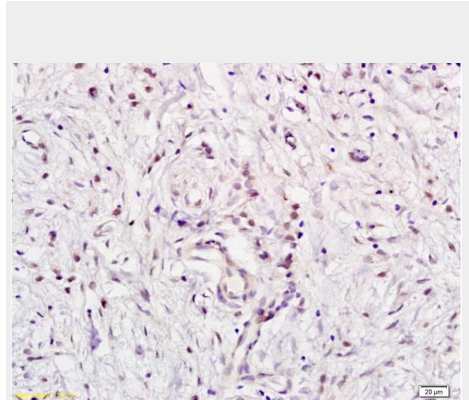
Cellular Location

Nucleus.

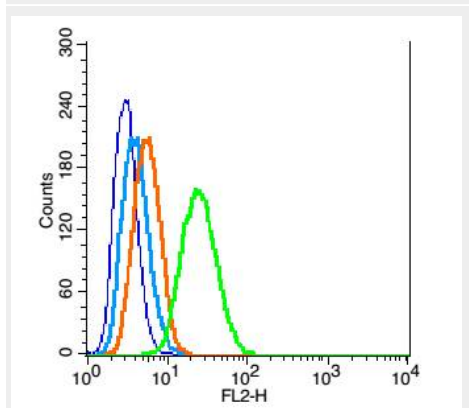
Rabbit Anti-E2F5 Polyclonal Antibody - Protocols

Provided below are standard protocols that you may find useful for product applications.

□ [Western Blot](#)



Formalin-fixed and paraffin embedded human gastric carcinoma labeled with Anti E2F5 Polyclonal Antibody, Unconjugated (AP52267) at 1:200 followed by conjugation to the secondary antibody and DAB staining



RSC96 cells probed with E2F5 Polyclonal Antibody, Unconjugated (AP52267) at 1:100 for 30 minutes followed by incubation with a conjugated secondary (PE Conjugated) (green) for 30 minutes compared to control cells (blue), secondary only (light blue) and isotype control (orange).

- [□ Blocking Peptides](#)
- [□ Dot Blot](#)
- [□ Immunohistochemistry](#)
- [□ Immunofluorescence](#)
- [□ Immunoprecipitation](#)
- [□ Flow Cytometry](#)
- [□ Cell Culture](#)

Rabbit Anti-E2F5 Polyclonal Antibody - Background

Transcriptional activator that binds to E2F sites, these sites are present in the promoter of many genes whose products are involved in cell proliferation. May mediate growth factor- initiated signal transduction. It is likely involved in the early responses of resting cells to growth factor stimulation.

Rabbit Anti-E2F5 Polyclonal Antibody - References

Itoh A., et al. *Cell. Mol. Biol. Res.* 41:147-154(1995). Hijmans E.M., et al. *Mol. Cell. Biol.* 15:3082-3089(1995). Sardet C., et al. *Proc. Natl. Acad. Sci. U.S.A.* 92:2403-2407(1995). Vaishnav Y.N., et al. *Biochem. Biophys. Res. Commun.* 242:586-592(1998). Li W.B., et al. Submitted (APR-2003) to the EMBL/GenBank/DDBJ databases.