

Keratin(50-60kDa) Antibody

Purified Mouse Monoclonal Antibody (Mab)

Catalog # AP52831-100 □

Specification

Keratin(50-60kDa) Antibody - Product Information

Application	WB
Primary Accession	P13647
Reactivity	Human, Mouse
Host	Mouse
Clonality	Monoclonal
Isotype	IgG1
Calculated MW	62 KDa

Keratin(50-60kDa) Antibody - Additional Information

Gene ID 3852

Other Names

58 kDa cytokeratin; CK 5; CK-5; CK5; Cytokeratin-5; Cytokeratin5; DDD; DDD1; EBS 2; EBS2; epidermolysis bullosa simplex 2 Dowling-Meara/Kobner/Weber-Cockayne types; K2C5_HUMAN; K5; Keratin 5 (epidermolysis bullosa simplex Dowling-Meara/Kobner/Weber-Cockayne types); keratin 5 (epidermolysis bullosa simplex, Dowling-Meara/Kobner/Weber-Cockayne types); Keratin 5; Keratin; keratin complex 2, basic, gene 5; Keratin Type II Cytoskeletal 5; keratin, type II cytoskeletal 5; Keratin-5; Keratin5; KRT 5; KRT 5A; KRT5; KRT5A; type II cytoskeletal 5; Type-II keratin Kb5.

Dilution

WB~~1:2000

Format

Purified mouse monoclonal antibody in PBS(pH 7.4) containing with 0.03% Proclin300 and 50% glycerol.

Storage

Store at -20 °C.Stable for 12 months from date of receipt

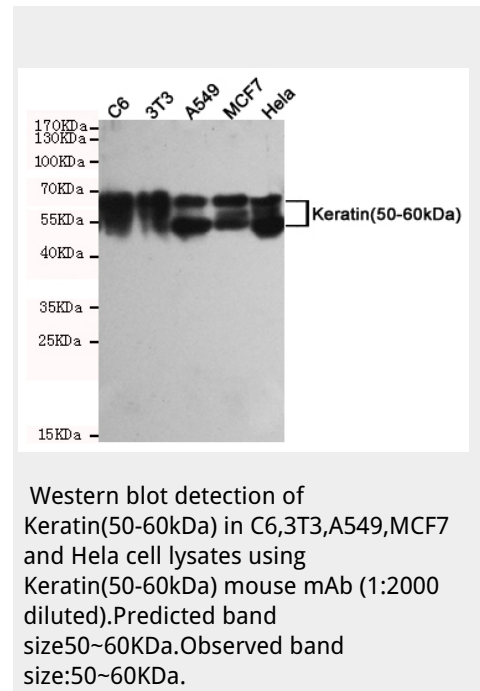
Keratin(50-60kDa) Antibody - Protein Information

Name KRT5

Keratin(50-60kDa) Antibody - Protocols

Provided below are standard protocols that you may find useful for product applications.

- [Western Blot](#)
- [Blocking Peptides](#)
- [Dot Blot](#)
- [Immunohistochemistry](#)



[□Immunofluorescence](#)

[□Immunoprecipitation](#)

[□Flow Cytometry](#)

[□Cell Culture](#)

Keratin(50-60kDa) Antibody - References

Eckert R.L.,et al.DNA 7:337-345(1988). Lersch R.,et al.Mol. Cell. Biol. 9:3685-3697(1989). Whittock N.V.,et al.Biochem. Biophys. Res. Commun. 274:149-152(2000). Lersch R.,et al.Mol. Cell. Biol. 8:486-493(1988). Xu Z.,et al.Clin. Exp. Dermatol. 29:74-76(2004).