

Anti-Placental alkaline phosphatase (PLAP) Antibody
Mouse Anti Human Monoclonal Antibody
Catalog # AP53405-100 □

Specification

Anti-Placental alkaline phosphatase (PLAP) Antibody - Product Information

Application	WB
Primary Accession	P05187
Other Accession	NM_001632
Reactivity	Human
Host	Mouse
Clonality	Monoclonal
Isotype	IgG1
Immunogen	Purified recombinant Placental alkaline phosphatase (PLAP) protein fragments expressed in E.coli.
Purification	Affinity purified
Calculated MW	70 KDa

Anti-Placental alkaline phosphatase (PLAP) Antibody - Additional Information

Gene ID 250

Other Names

Alkaline phosphatase; Alkaline phosphatase placental; Alkaline phosphatase placental type; Alkaline phosphatase Regan isozyme; ALP; Alp1; ALPP; FLJ61142; Germ-cell alkaline phosphatase; nagao isozyme; OTTHUMP00000164354; PALP; Placental alkaline phosphatase 1; placental heat-stable alkaline phosphatase; placental type; PLAP; PLAP-1; PLAP1; PPB1_HUMAN.

Dilution

WB~~1:1000

Format

PBS(pH 7.4) containing with 0.03% Proclin300 and 50% glycerol.

Storage

Store at -20 °C.Stable for 12 months from date of receipt

Anti-Placental alkaline phosphatase (PLAP) Antibody - Protein Information

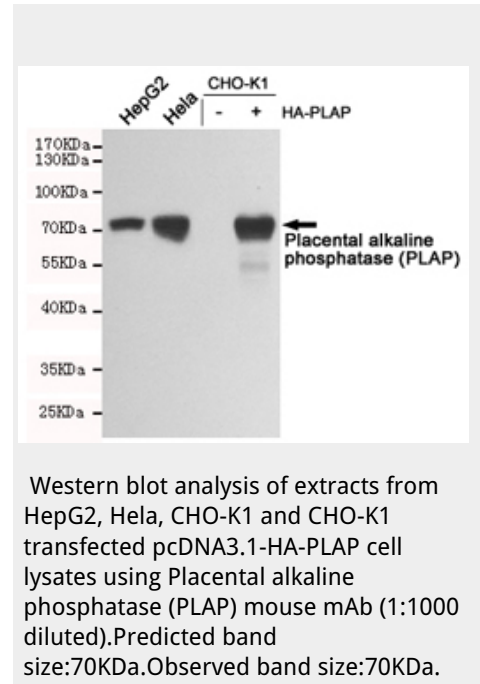
Name ALPP

Synonyms PLAP

Cellular Location

Cell membrane; Lipid-anchor, GPI-anchor.

Tissue Location



Detected in placenta (at protein level).

Anti-Placental alkaline phosphatase (PLAP) Antibody - Protocols

Provided below are standard protocols that you may find useful for product applications.

- [□Western Blot](#)
- [□Blocking Peptides](#)
- [□Dot Blot](#)
- [□Immunohistochemistry](#)
- [□Immunofluorescence](#)
- [□Immunoprecipitation](#)
- [□Flow Cytometry](#)
- [□Cell Culture](#)