

ATF4 Antibody (S245)

Peptide Affinity Purified Rabbit Polyclonal Antibody (Pab)
Catalog # AP6287a-400 □

Specification

ATF4 Antibody (S245) - Product info

| | |
|-------------------|------------------------|
| Application | WB |
| Primary Accession | Q96AQ3 |
| Other Accession | P18848 |
| Reactivity | Human |
| Host | Rabbit |
| Clonality | Polyclonal |
| Isotype | Rabbit Ig |
| Clone Names | RB10931 |

ATF4 Antibody (S245) - Additional info

Other Names

Tax-responsive enhancer element B67; ATF4 protein

Target/Specificity

This ATF4 antibody is generated from rabbits immunized with a KLH conjugated synthetic peptide between 220-252 amino acids from human ATF4.

Dilution

WB~1:1000

Format

Purified polyclonal antibody supplied in PBS with 0.09% (W/V) sodium azide. This antibody is purified through a protein A column, followed by peptide affinity purification.

Storage

Maintain refrigerated at 2-8°C for up to 2 weeks. For long term storage store at -20°C in small aliquots to prevent freeze-thaw cycles.

Precautions

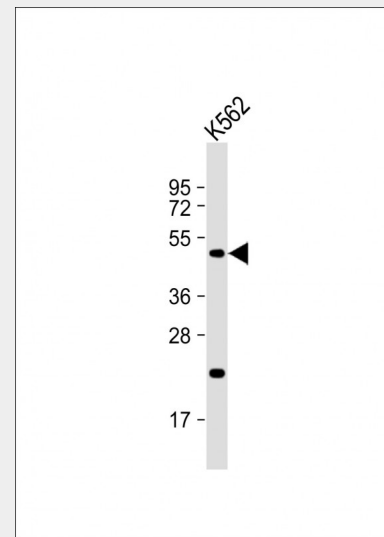
ATF4 Antibody (S245) is for research use only and not for use in diagnostic or therapeutic procedures.

ATF4 Antibody (S245) - Protein Information

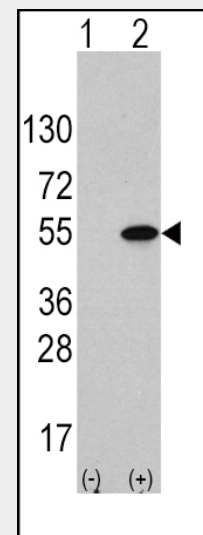
ATF4 Antibody (S245) - Protocols

Provided below are standard protocols that you may find useful for product applications.

- [Western Blot](#)
- [Blocking Peptides](#)
- [Dot Blot](#)
- [Immunohistochemistry](#)
- [Immunofluorescence](#)



Anti-ATF4 Antibody (S245) at 1:1000 dilution + K562 whole cell lysate
Lysates/proteins at 20 µg per lane.
Secondary Goat Anti-Rabbit IgG, (H+L), Peroxidase conjugated at 1/10000 dilution. Predicted band size : 39 kDa
Blocking/Dilution buffer: 5% NFD/MTBST.



Western blot analysis of ATF4 (arrow) using rabbit anti-ATF4 Antibody (S245) (Cat. #AP6287a). 293 cell lysates (2 µg/lane) either nontransfected (Lane 1) or transiently transfected with the ATF4 gene (Lane 2) (Origene Technologies).

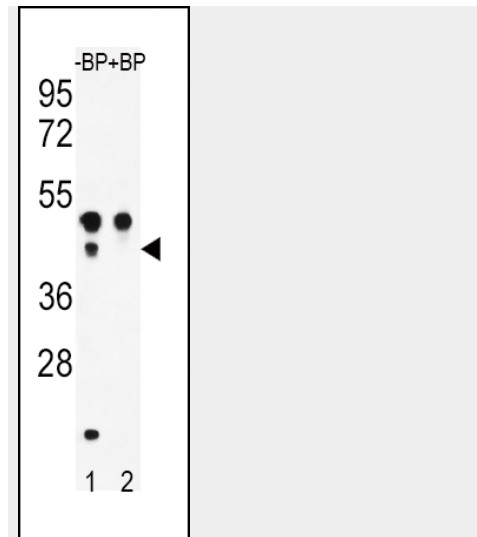
- [□ Immunoprecipitation](#)
- [□ Flow Cytometry](#)
- [□ Cell Culture](#)

ATF4 Antibody (S245) - Background

ATF4 is a transcription factor that was originally identified as a widely expressed mammalian DNA binding protein that could bind a tax-responsive enhancer element in the LTR of HTLV-1. The encoded protein was also isolated and characterized as the cAMP-response element binding protein 2 (CREB-2). ATF4 belongs to a family of DNA-binding proteins that includes the AP-1 family of transcription factors, cAMP-response element binding proteins (CREBs) and CREB-like proteins. These transcription factors share a leucine zipper region that is involved in protein-protein interactions, located C-terminal to a stretch of basic amino acids that functions as a DNA binding domain.

ATF4 Antibody (S245) - References

Gombart,A.F., J. Leukoc. Biol. 81 (6), 1535-1547 (2007) Jousse,C., J. Biol. Chem. 282 (21), 15851-15861 (2007) Kakiuchi,C., Neurosci. Lett. 417 (3), 316-321 (2007) Marchand,A., J. Biol. Chem. 281 (28), 19124-19133 (2006)



Western blot analysis of ATF4 Antibody (S245) Pab (Cat. #AP6287a) pre-incubated without (lane 1) and with (lane 2) blocking peptide in WiDr cell line lysate. ATF4 Antibody (pS245) (arrow) was detected using the purified Pab.