

## CYP1A1 Antibody (C-term)

Purified Rabbit Polyclonal Antibody (Pab)

Catalog # AP7993B-200 □

### Specification

#### CYP1A1 Antibody (C-term) - Product info

Application	WB, IHC-P
Primary Accession	<a href="#">P04798</a>
Other Accession	<a href="#">P33616</a>
Reactivity	Human, Mouse
Predicted	Monkey
Host	Rabbit
Clonality	Polyclonal
Isotype	Rabbit Ig

#### CYP1A1 Antibody (C-term) - Additional info

Gene ID 1543

#### Other Names

Cytochrome P450 1A1, CYP1A1, Cytochrome P450 form 6, Cytochrome P450-C, Cytochrome P450-P1, CYP1A1

#### Target/Specificity

This CYP1A1 antibody is generated from rabbits immunized with a KLH conjugated synthetic peptide between 377-405 amino acids from the C-terminal region of human CYP1A1.

#### Dilution

WB~~1:1000

IHC-P~~1:10~50

#### Format

Purified polyclonal antibody supplied in PBS with 0.09% (W/V) sodium azide. This antibody is prepared by Saturated Ammonium Sulfate (SAS) precipitation followed by dialysis against PBS.

#### Storage

Maintain refrigerated at 2-8°C for up to 2 weeks. For long term storage store at -20°C in small aliquots to prevent freeze-thaw cycles.

#### Precautions

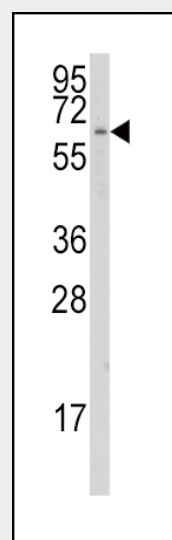
CYP1A1 Antibody (C-term) is for research use only and not for use in diagnostic or therapeutic procedures.

#### CYP1A1 Antibody (C-term) - Protein Information

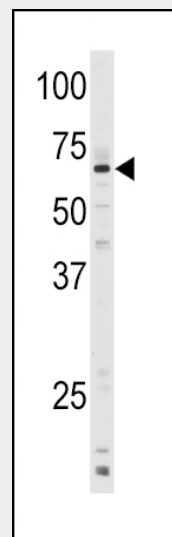
Name CYP1A1

#### Function

Cytochromes P450 are a group of heme-thiolate monooxygenases. In liver microsomes, this enzyme is involved in an NADPH-dependent electron transport pathway. It oxidizes a variety of structurally unrelated compounds, including steroids, fatty acids, and xenobiotics.



Western blot analysis of anti-CYP1A1 Antibody (C-term) (Cat.#AP7993b) in K562 cell line lysates (35ug/lane). CYP1A1(arrow) was detected using the purified Pab.



Western blot analysis of anti-CYP1A1 Antibody (C-term) (Cat.#AP7993b) in mouse lung tissue lysates (35ug/lane). CYP1A1(arrow) was detected using the purified Pab.

#### Cellular Location

Endoplasmic reticulum membrane {ECO:0000250|UniProtKB:P00185}; Peripheral membrane protein {ECO:0000250|UniProtKB:P00185}. Mitochondrion inner membrane {ECO:0000250|UniProtKB:P00185}; Peripheral membrane protein {ECO:0000250|UniProtKB:P00185}. Microsome membrane {ECO:0000250|UniProtKB:P00185}; Peripheral membrane protein {ECO:0000250|UniProtKB:P00185}. Cytoplasm {ECO:0000250|UniProtKB:P00185}

#### Tissue Location

Lung, lymphocytes and placenta.

#### CYP1A1 Antibody (C-term) - Protocols

Provided below are standard protocols that you may find useful for product applications.

- [□ Western Blot](#)
- [□ Blocking Peptides](#)
- [□ Dot Blot](#)
- [□ Immunohistochemistry](#)
- [□ Immunofluorescence](#)
- [□ Immunoprecipitation](#)
- [□ Flow Cytometry](#)
- [□ Cell Culture](#)

#### CYP1A1 Antibody (C-term) - Background

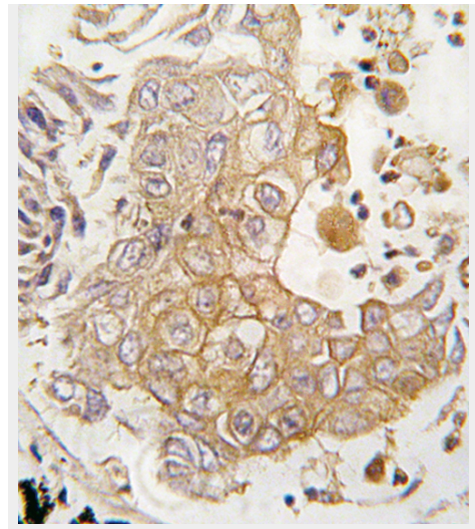
CYP1A1 is a member of the cytochrome P450 superfamily of enzymes. The cytochrome P450 proteins are monooxygenases which catalyze many reactions involved in drug metabolism and synthesis of cholesterol, steroids and other lipids. This protein localizes to the endoplasmic reticulum and its expression is induced by some polycyclic aromatic hydrocarbons (PAHs), some of which are found in cigarette smoke. The enzyme's endogenous substrate is unknown; however, it is able to metabolize some PAHs to carcinogenic intermediates. CYP1A1 gene has been associated with lung cancer risk.

#### CYP1A1 Antibody (C-term) - References

Delpisheh,A., Eur. J. Obstet. Gynecol. Reprod. Biol. 143 (1), 38-42 (2009) Zhuo,W., Cancer Invest. 27 (1), 86-95 (2009)

#### CYP1A1 Antibody (C-term) - Citations

- [Evaluation of the effect of the new methoxy-stilbenes on expression of receptors and enzymes involved in estrogen synthesis in cancer breast cells.](#)
- [Differential effect of troglitazone on the human bile acid transporters, MRP2 and BSEP, in the PXB hepatic chimeric mouse.](#)



Formalin-fixed and paraffin-embedded human lung carcinoma tissue reacted with CYP1A1 antibody (C-term), which was peroxidase-conjugated to the secondary antibody, followed by DAB staining. This data demonstrates the use of this antibody for immunohistochemistry; clinical relevance has not been evaluated.