

# Anti-Collagen-I Antibody

Rabbit Polyclonal Antibody  
Catalog # ABV11815

## Product Information

---

<b>Application</b>	WB, DB
<b>Primary Accession</b>	<a href="#">P02452</a>
<b>Reactivity</b>	Human
<b>Host</b>	Rabbit
<b>Clonality</b>	Polyclonal
<b>Isotype</b>	Rabbit IgG
<b>Calculated MW</b>	138911

## Additional Information

---

<b>Gene ID</b>	1277
<b>Positive Control</b>	Dot blot: rh collagen-I
<b>Application &amp; Usage</b>	WB: 1-4 µg, Dot blot: 1-4 µg
<b>Alias Symbol</b>	COL1A1
<b>Other Names</b>	Alpha-1 type I collagen, Collagen alpha-1(I) chain
<b>Appearance</b>	Colorless liquid
<b>Formulation</b>	In PBS pH 7.2, 0.01 % BSA, 0.03 % ProClin® and 50 % glycerol
<b>Reconstitution &amp; Storage</b>	-20 °C
<b>Background Descriptions</b>	
<b>Precautions</b>	Anti-Collagen-I Antibody is for research use only and not for use in diagnostic or therapeutic procedures.

## Protein Information

---

<b>Name</b>	COL1A1
<b>Function</b>	Type I collagen is a member of group I collagen (fibrillar forming collagen).
<b>Cellular Location</b>	Secreted, extracellular space, extracellular matrix {ECO:0000255   PROSITE-ProRule:PRU00793}
<b>Tissue Location</b>	Forms the fibrils of tendon, ligaments and bones. In bones the fibrils are mineralized with calcium hydroxyapatite

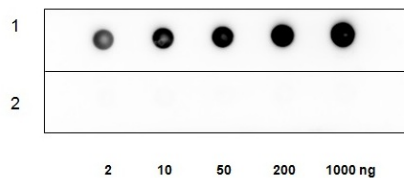
## Background

---

Collagen, a major component of the extracellular matrix, is a fibrous protein that provides tensile strength to tissues giving them structural integrity. Collagen and its derivative, gelatin, have been widely used in medical, pharmaceutical and consumer products for more than 100 years. Collagens are fibrous, extracellular matrix proteins with high tensile strength and are the major components of connective tissue, such as tendons and cartilage. All collagens contain a triple helix domain and frequently show lateral self-association in order to form complex connective tissues. Several collagens also play a role in cell adhesion, important for maintaining normal tissue architecture and function. The extensive family of COL gene products (collagens) is composed of several chain types, including fibril-forming interstitial collagens (types I, II, III and V) and basement membrane collagens (type IV), each type containing multiple isoforms.

## Images

---



Dot blot analysis of collagen using anti-Collagen antibody:  
Lane1 (rh Collagen-1); Lane2 (BSA)

Please note: All products are 'FOR RESEARCH USE ONLY. NOT FOR USE IN DIAGNOSTIC OR THERAPEUTIC PROCEDURES'.