

Anti- CD31 (PECAM-1) Rabbit Monoclonal Antibody

Rabbit Monoclonal Antibody

Catalog # ABV11817

Product Information

Application	WB, IHC
Primary Accession	P16284
Reactivity	Human
Host	Rabbit
Clonality	Monoclonal
Isotype	Rabbit IgG
Calculated MW	82522

Additional Information

Gene ID	5175
Positive Control	WB: Jurkat cell lysates; IHC: human breast cancer tissue
Application & Usage	IHC: 1:1000 -1:2500 dilution; WB: 1:1000 - 1:2000 dilution
Alias Symbol	PECAM-1
Other Names	EndoCAM, GPIIA', PECA1, CD_antigen: CD31, PECAM-1
Appearance	Colorless liquid
Formulation	In 50% Glycerol/PBS with 1% BSA and 0.09% sodium azide
Reconstitution & Storage	-20 °C
Background Descriptions	
Precautions	Anti- CD31 (PECAM-1) Rabbit Monoclonal Antibody is for research use only and not for use in diagnostic or therapeutic procedures.

Protein Information

Name	PECAM1
Function	Cell adhesion molecule which is required for leukocyte transendothelial migration (TEM) under most inflammatory conditions (PubMed: 17580308 , PubMed: 19342684). Tyr-690 plays a critical role in TEM and is required for efficient trafficking of PECAM1 to and from the lateral border recycling compartment (LBRC) and is also essential for the LBRC membrane to be targeted around migrating leukocytes (PubMed: 19342684). Trans-homophilic interaction may play a role in endothelial cell-cell adhesion via cell junctions (PubMed: 27958302). Heterophilic interaction with CD177 plays a role in transendothelial migration of neutrophils (PubMed: 17580308). Homophilic ligation of PECAM1 prevents macrophage-mediated phagocytosis of

neighboring viable leukocytes by transmitting a detachment signal (PubMed:[12110892](#)). Promotes macrophage-mediated phagocytosis of apoptotic leukocytes by tethering them to the phagocytic cells; PECAM1-mediated detachment signal appears to be disabled in apoptotic leukocytes (PubMed:[12110892](#)). Modulates bradykinin receptor BDKRB2 activation (PubMed:[18672896](#)). Regulates bradykinin- and hyperosmotic shock-induced ERK1/2 activation in endothelial cells (PubMed:[18672896](#)). Induces susceptibility to atherosclerosis (By similarity).

Cellular Location

Cell membrane; Single-pass type I membrane protein. Note=Cell surface expression on neutrophils is down-regulated upon fMLP or CXCL8/IL8-mediated stimulation. [Isoform Delta15]: Cell junction. Note=Localizes to the lateral border recycling compartment (LBRC) and recycles from the LBRC to the junction in resting endothelial cells

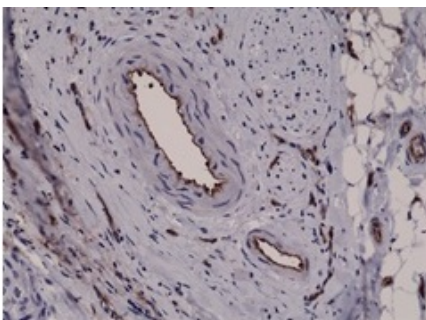
Tissue Location

Expressed on platelets and leukocytes and is primarily concentrated at the borders between endothelial cells (PubMed:18388311, PubMed:21464369). Expressed in human umbilical vein endothelial cells (HUVECs) (at protein level) (PubMed:17580308, PubMed:19342684). Expressed on neutrophils (at protein level) (PubMed:17580308). Isoform Long predominates in all tissues examined (PubMed:12433657). Isoform Delta12 is detected only in trachea (PubMed:12433657). Isoform Delta14-15 is only detected in lung (PubMed:12433657). Isoform Delta14 is detected in all tissues examined with the strongest expression in heart (PubMed:12433657). Isoform Delta15 is expressed in brain, testis, ovary, cell surface of platelets, human umbilical vein endothelial cells (HUVECs), Jurkat T- cell leukemia, human erythroleukemia (HEL) and U-937 histiocytic lymphoma cell lines (at protein level) (PubMed:12433657, PubMed:18388311).

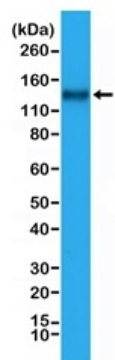
Background

Induces susceptibility to atherosclerosis. Cell adhesion molecule which is required for leukocyte transendothelial migration (TEM) under most inflammatory conditions. Tyr-690 plays a critical role in TEM and is required for efficient trafficking of PECAM1 to and from the lateral border recycling compartment (LBRC) and is also essential for the LBRC membrane to be targeted around migrating leukocytes. Prevents phagocyte ingestion of closely apposed viable cells by transmitting 'detachment' signals, and changes function on apoptosis, promoting tethering of dying cells to phagocytes (the encounter of a viable cell with a phagocyte via the homophilic interaction of PECAM1 on both cell surfaces leads to the viable cell's active repulsion from the phagocyte. During apoptosis, the inside-out signaling of PECAM1 is somehow disabled so that the apoptotic cell does not actively reject the phagocyte anymore. The lack of this repulsion signal together with the interaction of the eat-me signals and their respective receptors causes the attachment of the apoptotic cell to the phagocyte, thus triggering the process of engulfment). Isoform Delta15 is unable to protect against apoptosis. Modulates BDKRB2 activation. Regulates bradykinin- and hyperosmotic shock-induced ERK1/2 activation in human umbilical cord vein cells (HUVEC).

Images



Immunohistochemical staining of formalin fixed and paraffin embedded human breast cancer tissue sections using anti-CD31 antibody at 1:2500 dilution.



Western blot of Jurkat cell lysate using anti-CD31 antibody at 1:1000 dilution, showed CD31(~130kDa) expression in Jurkat cells.

Please note: All products are 'FOR RESEARCH USE ONLY. NOT FOR USE IN DIAGNOSTIC OR THERAPEUTIC PROCEDURES'.