

# Anti-Alpha-1D Adrenergic Receptor Antibody

Rabbit Polyclonal Antibody

Catalog # ABV11858

## Product Information

---

<b>Application</b>	WB, IHC, IF, ICC
<b>Primary Accession</b>	<a href="#">P25100</a>
<b>Reactivity</b>	Human, Mouse, Rat
<b>Host</b>	Rabbit
<b>Clonality</b>	Polyclonal
<b>Isotype</b>	Rabbit IgG
<b>Calculated MW</b>	60463

## Additional Information

---

<b>Gene ID</b>	146
<b>Positive Control</b>	WB: MCSF7, RAW264.7, H9C2 cell lysate
<b>Application &amp; Usage</b>	WB; 1:500 – 1:2000, IHC; 1:50 – 1:200, IF/IC; 1:50 – 1:100
<b>Alias Symbol</b>	ADRA1D
<b>Other Names</b>	ADRA1A, Alpha-1D adrenergic receptor, Alpha-1A adrenergic receptor, Alpha-1D adrenoreceptor; Alpha-1D adrenoceptor, Alpha-adrenergic receptor 1a
<b>Appearance</b>	Colorless liquid
<b>Formulation</b>	In 0.42% Potassium phosphate; 0.87% Sodium chloride; pH 7.3; 30% glycerol and 0.01% sodium azide
<b>Reconstitution &amp; Storage</b>	-20 °C
<b>Background Descriptions</b>	
<b>Precautions</b>	Anti-Alpha-1D Adrenergic Receptor Antibody is for research use only and not for use in diagnostic or therapeutic procedures.

## Protein Information

---

<b>Name</b>	ADRA1D
<b>Synonyms</b>	ADRA1A
<b>Function</b>	This alpha-adrenergic receptor mediates its effect through the influx of extracellular calcium.
<b>Cellular Location</b>	Cell membrane; Multi-pass membrane protein.

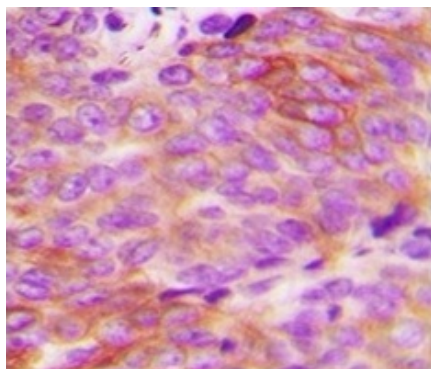
## Background

---

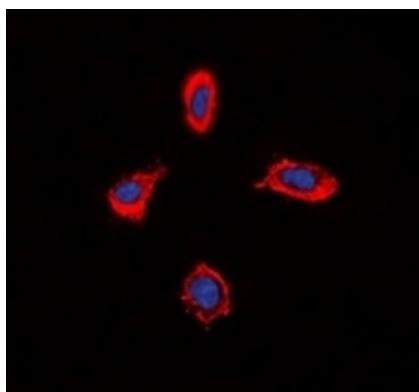
This alpha-adrenergic receptor mediates its effect through the influx of extracellular calcium.

## Images

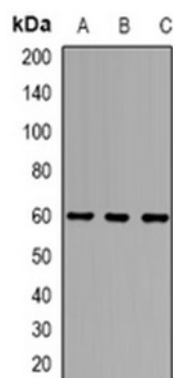
---



Immunohistochemical analysis of Alpha-1D Adrenergic Receptor staining in H.breast cancer formalin fixed paraffin embedded tissue section.



Immunofluorescent analysis of alpha-1D adrenergic receptor staining in MCF7 cells.



Western blot analysis of alpha-1D adrenergic receptor expression in MCF7(A); RAW264.7(B); H9C2(C) whole cell lysates.

Please note: All products are 'FOR RESEARCH USE ONLY. NOT FOR USE IN DIAGNOSTIC OR THERAPEUTIC PROCEDURES'.