

Anti-Cadherin 20 Antibody

Rabbit Polyclonal Antibody

Catalog # ABV11868

Product Information

Application	WB, IHC, IF, ICC
Primary Accession	Q9HBT6
Reactivity	Human, Mouse, Rat
Host	Rabbit
Clonality	Polyclonal
Isotype	Rabbit IgG
Calculated MW	88993

Additional Information

Gene ID	28316
Positive Control	WB: HeLa, mouse liver, rat liver; IHC: human brain tissue; IFC: Hela cells
Application & Usage	WB; 1:500 - 1:2000, IHC; 1:50 - 1:200, IF/IC; 1:50 - 1:100
Alias Symbol	CDH20
Other Names	CDH7L3, Cadherin-20
Appearance	Colorless liquid
Formulation	In 0.42% Potassium phosphate; 0.87% Sodium chloride; pH 7.3; 30% glycerol and 0.01% sodium azide
Reconstitution & Storage	-20 °C
Background Descriptions	
Precautions	Anti-Cadherin 20 Antibody is for research use only and not for use in diagnostic or therapeutic procedures.

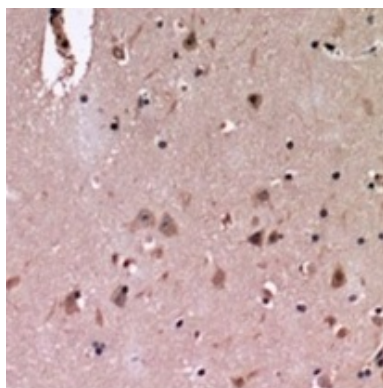
Protein Information

Name	CDH20
Synonyms	CDH7L3
Function	Cadherins are calcium-dependent cell adhesion proteins. They preferentially interact with themselves in a homophilic manner in connecting cells; cadherins may thus contribute to the sorting of heterogeneous cell types.
Cellular Location	Cell membrane; Single-pass type I membrane protein
Tissue Location	Expressed in placenta, adult brain, and fetal brain

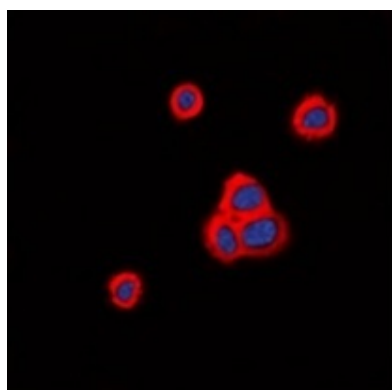
Background

Cadherins are calcium-dependent cell adhesion proteins. They preferentially interact with themselves in a homophilic manner in connecting cells; cadherins may thus contribute to the sorting of heterogeneous cell types.

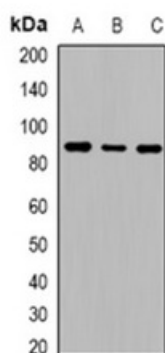
Images



Immunohistochemical analysis of Cadherin 20 staining in H.brain formalin fixed paraffin embedded tissue section.



Immunofluorescent analysis of cadherin 20 staining in Hela cells.



Western blot analysis of Cadherin 20 expression in Hela(A); M.liver(B); R.liver(C) whole cell lysates.

Please note: All products are 'FOR RESEARCH USE ONLY. NOT FOR USE IN DIAGNOSTIC OR THERAPEUTIC PROCEDURES'.