

Anti-MYBPC3 Antibody

Rabbit Polyclonal antibody
Catalog # ABV11876

Product Information

Application	WB, IHC
Primary Accession	Q14896
Reactivity	Human, Mouse, Rat
Host	Rabbit
Clonality	Polyclonal
Isotype	Rabbit IgG
Calculated MW	140762

Additional Information

Gene ID	4607
Positive Control	WB: mouse heart, rat heart lysate; IHC: human heart tissue
Application & Usage	WB; 1:500 – 1:2000, IHC; 1:50 – 1:200
Alias Symbol	MYBPC3
Other Names	Myosin-binding protein C cardiac-type, Cardiac MyBP-C, C-protein cardiac muscle isoform
Formulation	In 0.42% Potassium phosphate; 0.87% Sodium chloride; pH 7.3; 30% glycerol and 0.01% sodium azide
Reconstitution & Storage	12 months under -20°C
Background Descriptions	
Precautions	Anti-MYBPC3 Antibody is for research use only and not for use in diagnostic or therapeutic procedures.

Protein Information

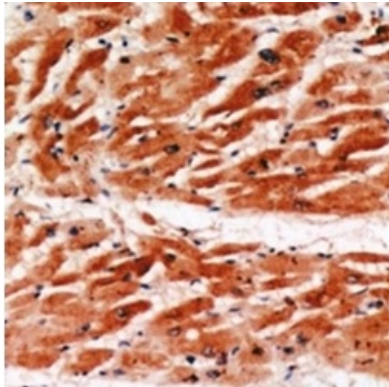
Name	MYBPC3
Function	Thick filament-associated protein located in the crossbridge region of vertebrate striated muscle a bands. In vitro it binds MHC, F- actin and native thin filaments, and modifies the activity of actin- activated myosin ATPase. It may modulate muscle contraction or may play a more structural role.

Background

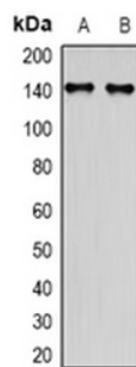
Thick filament-associated protein located in the crossbridge region of vertebrate striated muscle bands. In vitro it binds MHC, F-actin and native thin filaments, and modifies the activity of actin-activated myosin

ATPase. It may modulate muscle contraction or may play a more structural role.

Images



Immunohistochemical analysis of MYBPC3 staining in human heart formalin fixed paraffin embedded tissue section.



Western blot analysis of MYBPC3 expression in mouse heart(A), rat heart(B) whole celllysates.

Please note: All products are 'FOR RESEARCH USE ONLY. NOT FOR USE IN DIAGNOSTIC OR THERAPEUTIC PROCEDURES'.