

Red Fluorescent Protein (dsRed) Antibody

Catalog # ABV11888

Product Information

Application	WB, IHC, IF
Primary Accession	P00273
Host	Mouse
Isotype	Mouse IgG2b
Clone Names	BV3-2
Calculated MW	3936

Additional Information

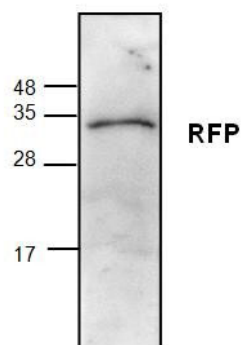
Application & Usage	The antibody can be used for WBting (1-4 μ g/ml), IF (10-20 μ g/ml) and IHC (10-20 μ g/ml). However, the optimal conditions should be determined individually.
Other Names	Red Fluorescent Protein
Target/Specificity	RFP (dsRed)
Antibody Form	Liquid
Appearance	Colorless liquid
Handling	The antibody solution should be gently mixed before use.
Reconstitution & Storage	-20 °C
Background Descriptions	
Precautions	Red Fluorescent Protein (dsRed) Antibody is for research use only and not for use in diagnostic or therapeutic procedures.

Protein Information

Name	dsr
Function	Nonheme iron protein possibly involved in electron transport.

Images

WB analysis of recombinant protein dsRed (200 ng).



Please note: All products are 'FOR RESEARCH USE ONLY. NOT FOR USE IN DIAGNOSTIC OR THERAPEUTIC PROCEDURES'.