

# Anti-MYCBP Antibody

Catalog # ABV11930

## Product Information

---

<b>Application</b>	WB, IHC
<b>Primary Accession</b>	<a href="#">Q99417</a>
<b>Reactivity</b>	Human, Mouse, Rat
<b>Host</b>	Rabbit
<b>Isotype</b>	Rabbit IgG
<b>Calculated MW</b>	11967

## Additional Information

---

<b>Gene ID</b>	26292
<b>Positive Control</b>	WB: A549, rat lung cell lysate; IHC: human heart tissue
<b>Application &amp; Usage</b>	WB; 1:500 – 1:2000, IHC; 1:50 – 1:200
<b>Other Names</b>	AMY1, C-Myc-binding protein, Associate of Myc 1, AMY-1
<b>Target/Specificity</b>	MYCBP
<b>Antibody Form</b>	Liquid
<b>Appearance</b>	Colorless liquid
<b>Handling</b>	The antibody solution should be gently mixed before use
<b>Reconstitution &amp; Storage</b>	-20°C
<b>Background Descriptions</b>	
<b>Precautions</b>	Anti-MYCBP Antibody is for research use only and not for use in diagnostic or therapeutic procedures.

## Protein Information

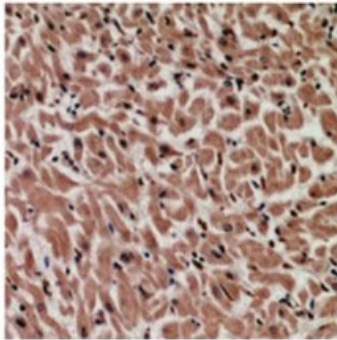
---

<b>Name</b>	MYCBP ( <a href="#">HGNC:7554</a> )
<b>Synonyms</b>	AMY1
<b>Function</b>	May control the transcriptional activity of MYC. Stimulates the activation of E box-dependent transcription by MYC.
<b>Cellular Location</b>	Cytoplasm. Nucleus. Mitochondrion. Note=Translocates into the nucleus in the S phase of the cell cycle upon an increase of MYC expression. Found in the mitochondria when associated with AKAP1
<b>Tissue Location</b>	Highly expressed in heart, placenta, pancreas, skeletal muscle and kidney.

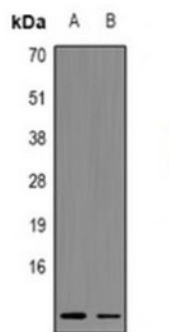
Also present at low levels in lung

## Images

---



Immunohistochemical analysis of MYCBP staining in human heart formalin fixed paraffin embedded tissue section



WB analysis of MYCBP expression in A549 (A); rat lung (B) whole cell lysates

Please note: All products are 'FOR RESEARCH USE ONLY. NOT FOR USE IN DIAGNOSTIC OR THERAPEUTIC PROCEDURES'.