

# Anti-KLF13 Antibody

Catalog # ABV11940

## Product Information

---

<b>Application</b>	WB
<b>Primary Accession</b>	<a href="#">Q9Y2Y9</a>
<b>Reactivity</b>	Human, Mouse, Rat
<b>Host</b>	Rabbit
<b>Isotype</b>	Rabbit IgG
<b>Calculated MW</b>	31180

## Additional Information

---

<b>Gene ID</b>	51621
<b>Positive Control</b>	WB; Hela, NIH3T3, PC12 cell lysates
<b>Application &amp; Usage</b>	WB; 1:500 – 1:2000
<b>Other Names</b>	BTEB3; NSLP1; Krueppel-like factor 13; Basic transcription element-binding protein 3; BTE-binding protein 3; Novel Sp1-like zinc finger transcription factor 1; RANTES factor of late activated T-lymphocytes 1; RFLAT-1; Transcription factor BTEB3; Transcription factor NSLP1
<b>Target/Specificity</b>	KLF13
<b>Antibody Form</b>	Liquid
<b>Appearance</b>	Colorless liquid
<b>Handling</b>	The antibody solution should be gently mixed before use
<b>Reconstitution &amp; Storage</b>	-20°C
<b>Background Descriptions</b>	
<b>Precautions</b>	Anti-KLF13 Antibody is for research use only and not for use in diagnostic or therapeutic procedures.

## Protein Information

---

<b>Name</b>	KLF13 ( <a href="#">HGNC:13672</a> )
<b>Synonyms</b>	BTEB3, NSLP1
<b>Function</b>	Transcription factor that activates expression from GC-rich minimal promoter regions, including genes in the cells of the erythroid lineage (By similarity). Represses transcription by binding to the BTE site, a GC-rich DNA element, in competition with the activator SP1. It also represses transcription by interacting with the corepressor Sin3A and HDAC1 (PubMed: <a href="#">11477107</a> ).

Activates RANTES and CCL5 expression in T- cells (PubMed:[17513757](https://pubmed.ncbi.nlm.nih.gov/17513757/)).

**Cellular Location**

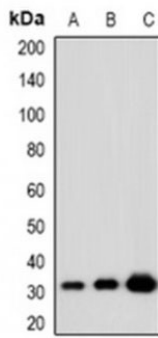
Nucleus.

**Tissue Location**

Ubiquitous.

**Images**

---



WB analysis (AcK166) expression in NIH3T3 (B); PC12 (C) lysates

Please note: All products are 'FOR RESEARCH USE ONLY. NOT FOR USE IN DIAGNOSTIC OR THERAPEUTIC PROCEDURES'.