

# Anti-WFDC5 Antibody

Catalog # ABV11970

## Product Information

---

<b>Application</b>	WB, IHC, E
<b>Primary Accession</b>	<a href="#">Q8TCV5</a>
<b>Reactivity</b>	Human
<b>Host</b>	Mouse
<b>Isotype</b>	Mouse IgG1 kappa
<b>Clone Names</b>	M47-P2D5
<b>Calculated MW</b>	24238

## Additional Information

---

<b>Gene ID</b>	149708
<b>Positive Control</b>	WB: Jurkat cell lysate; IHC: squamous cancer lung tissue sections
<b>Other Names</b>	PRG5protease inhibitor WAP1, Putative protease inhibitor WAP1, WAP four-disulfide core domain 5, WAP four-disulfide core domain protein 5, WAP1p53-responsive gene 5 protein
<b>Target/Specificity</b>	WFDC5
<b>Antibody Form</b>	Liquid
<b>Appearance</b>	Colorless liquid
<b>Handling</b>	The antibody solution should be gently mixed before use
<b>Reconstitution &amp; Storage</b>	-20°C
<b>Background Descriptions</b>	
<b>Precautions</b>	Anti-WFDC5 Antibody is for research use only and not for use in diagnostic or therapeutic procedures.

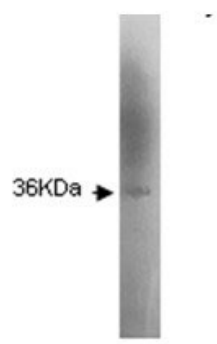
## Protein Information

---

<b>Name</b>	WFDC5
<b>Synonyms</b>	PRG5, WAP1
<b>Function</b>	Putative acid-stable proteinase inhibitor.
<b>Cellular Location</b>	Secreted.

## Images

---



WB analysis of WFOC5 Antibody in Jurkat cell lysate

Please note: All products are 'FOR RESEARCH USE ONLY. NOT FOR USE IN DIAGNOSTIC OR THERAPEUTIC PROCEDURES'.