

# Phospho-AP-1 (Ser63) Antibody

Catalog # ABV11980

## Product Information

---

<b>Application</b>	WB, IHC, E
<b>Primary Accession</b>	<a href="#">P05412</a>
<b>Reactivity</b>	Human, Rat
<b>Host</b>	Rabbit
<b>Isotype</b>	Rabbit IgG
<b>Calculated MW</b>	35676

## Additional Information

---

<b>Gene ID</b>	3725
<b>Positive Control</b>	WB: HeLa cell lysate
<b>Application &amp; Usage</b>	WB 1:500-1:2000; IHC 1:100-1:300; E 1:20000
<b>Other Names</b>	JUN; Transcription factor AP-1; Activator protein 1; AP1; Proto-oncogene c-Jun; V-jun avian sarcoma virus 17 oncogene homolog; p39
<b>Target/Specificity</b>	JUN
<b>Antibody Form</b>	Liquid
<b>Appearance</b>	Colorless liquid
<b>Handling</b>	The antibody solution should be gently mixed before use
<b>Reconstitution &amp; Storage</b>	-20°C
<b>Background Descriptions</b>	
<b>Precautions</b>	Phospho-AP-1 (Ser63) Antibody is for research use only and not for use in diagnostic or therapeutic procedures.

## Protein Information

---

<b>Name</b>	JUN
<b>Function</b>	Transcription factor that recognizes and binds to the AP-1 consensus motif 5'-TGA[GC]TCA-3' (PubMed: <a href="#">10995748</a> , PubMed: <a href="#">22083952</a> ). Heterodimerizes with proteins of the FOS family to form an AP-1 transcription complex, thereby enhancing its DNA binding activity to the AP-1 consensus sequence 5'-TGA[GC]TCA-3' and enhancing its transcriptional activity (By similarity). Together with FOSB, plays a role in activation-induced cell death of T cells by binding to the AP-1 promoter site of FASLG/CD95L, and inducing its transcription in response to activation of the TCR/CD3 signaling pathway (PubMed: <a href="#">12618758</a> ). Promotes activity of NR5A1 when phosphorylated by

HIPK3 leading to increased steroidogenic gene expression upon cAMP signaling pathway stimulation (PubMed:[17210646](#)). Involved in activated KRAS-mediated transcriptional activation of USP28 in colorectal cancer (CRC) cells (PubMed:[24623306](#)). Binds to the USP28 promoter in colorectal cancer (CRC) cells (PubMed:[24623306](#)).

**Cellular Location**

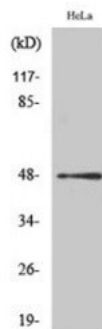
Nucleus.

**Tissue Location**

Expressed in the developing and adult prostate and prostate cancer cells.

## Images

---



WB analysis of HeLa cells using pphospho-AP-1 (Ser63) Polyclonal Antibody

Please note: All products are 'FOR RESEARCH USE ONLY. NOT FOR USE IN DIAGNOSTIC OR THERAPEUTIC PROCEDURES'.