

Phospho-Cofilin (Ser3) Antibody

Catalog # ABV11998

Product Information

Application	WB, IHC, E
Primary Accession	P23528
Reactivity	Human, Mouse, Rat
Host	Rabbit
Isotype	Rabbit IgG
Calculated MW	18502

Additional Information

Gene ID	1072
Positive Control	WB: COLO205 cell lysate
Application & Usage	WB 1:500-1:2000; IHC 1:100-1:300; E 1:10000
Other Names	Cofilin-1, 18 kDa phosphoprotein, p18, Cofilin, non-muscle isoform, CFL1, CFL
Target/Specificity	CFL1
Antibody Form	Liquid
Appearance	Colorless liquid
Handling	The antibody solution should be gently mixed before use
Reconstitution & Storage	-20°C
Background Descriptions	
Precautions	Phospho-Cofilin (Ser3) Antibody is for research use only and not for use in diagnostic or therapeutic procedures.

Protein Information

Name	CFL1
Synonyms	CFL
Function	Binds to F-actin and exhibits pH-sensitive F-actin depolymerizing activity (PubMed: 11812157). In conjunction with the subcortical maternal complex (SCMC), plays an essential role for zygotes to progress beyond the first embryonic cell divisions via regulation of actin dynamics (PubMed: 15580268). Required for the centralization of the mitotic spindle and symmetric division of zygotes (By similarity). Plays a role in the regulation of cell morphology and cytoskeletal organization in epithelial cells (PubMed: 21834987). Required for the up-regulation of atypical chemokine receptor ACKR2 from endosomal

compartment to cell membrane, increasing its efficiency in chemokine uptake and degradation (PubMed:[23633677](#)). Required for neural tube morphogenesis and neural crest cell migration (By similarity).

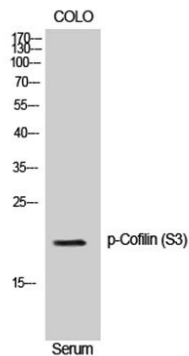
Cellular Location

Nucleus matrix. Cytoplasm, cytoskeleton. Cell projection, ruffle membrane; Peripheral membrane protein; Cytoplasmic side. Cell projection, lamellipodium membrane; Peripheral membrane protein; Cytoplasmic side. Cell projection, lamellipodium {ECO:0000250|UniProtKB:P18760}. Cell projection, growth cone {ECO:0000250|UniProtKB:P18760}. Cell projection, axon {ECO:0000250|UniProtKB:P18760}. Note=Colocalizes with the actin cytoskeleton in membrane ruffles and lamellipodia. Detected at the cleavage furrow and contractile ring during cytokinesis. Almost completely in nucleus in cells exposed to heat shock or 10% dimethyl sulfoxide

Tissue Location

Widely distributed in various tissues.

Images



WB analysis of COLO205 cells using Phospho-Cofilin (S3) Polyclonal Antibody.

Please note: All products are 'FOR RESEARCH USE ONLY. NOT FOR USE IN DIAGNOSTIC OR THERAPEUTIC PROCEDURES'.