

Phospho-CREB-1 (Ser133) Antibody

Catalog # ABV12000

Product Information

Application	WB, IHC, E, IP
Primary Accession	P16220
Reactivity	Human, Mouse, Rat
Isotype	Rabbit IgG
Calculated MW	35136

Additional Information

Gene ID	1385
Positive Control	WB: MCF-7 cells, PC3 cells, Hela cells, 3T3 cells
Application & Usage	WB 1:500-1:2000 IHC 1:100-1:300; IP 1:200-1:500; E 1:10000
Other Names	Cyclic AMP-responsive element-binding protein 1, CREB-1, cAMP-responsive element-binding protein 1, CREB1
Target/Specificity	CREB1
Antibody Form	Liquid
Appearance	Colorless liquid
Handling	The antibody solution should be gently mixed before use
Reconstitution & Storage	-20°C
Background Descriptions	
Precautions	Phospho-CREB-1 (Ser133) Antibody is for research use only and not for use in diagnostic or therapeutic procedures.

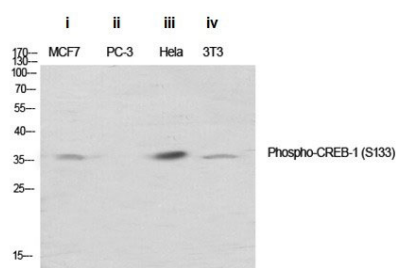
Protein Information

Name	CREB1
Function	Phosphorylation-dependent transcription factor that stimulates transcription upon binding to the DNA cAMP response element (CRE), a sequence present in many viral and cellular promoters (By similarity). Transcription activation is enhanced by the TORC coactivators which act independently of Ser-119 phosphorylation (PubMed: 14536081). Involved in different cellular processes including the synchronization of circadian rhythmicity and the differentiation of adipose cells (By similarity). Regulates the expression of apoptotic and inflammatory response factors in cardiomyocytes in response to ERFE-mediated activation of AKT signaling (By similarity).

Cellular Location

Nucleus {ECO:0000255 | PROSITE-ProRule:PRU00312,
ECO:0000255 | PROSITE-ProRule:PRU00978, ECO:0000269 | PubMed:12552083}

Images



WB analysis using PhosphoCREB-1 (S133) Polyclonal
Antibody in: (i) MCF-7 cells (ii) PC3 cells (iii) HeLa cells (iv)
3T3 cells

Please note: All products are 'FOR RESEARCH USE ONLY. NOT FOR USE IN DIAGNOSTIC OR THERAPEUTIC PROCEDURES'.