

# Anti-GPT2/ALT2 Antibody

Catalog # ABV12001

## Product Information

---

<b>Application</b>	WB
<b>Primary Accession</b>	<a href="#">Q8TD30</a>
<b>Reactivity</b>	Human
<b>Host</b>	Rabbit
<b>Isotype</b>	Rabbit IgG
<b>Calculated MW</b>	57904

## Additional Information

---

<b>Gene ID</b>	84706
<b>Positive Control</b>	WB: SHSY5Y, HepG2, HEK293T whole cell lysates
<b>Application &amp; Usage</b>	WB; 1:500 – 1:1000
<b>Other Names</b>	AAT2, ALT2, Alanine aminotransferase 2, ALT2, Glutamate pyruvate transaminase 2, GPT 2, Glutamic-alanine transaminase 2, Glutamic--pyruvic transaminase 2
<b>Target/Specificity</b>	GPT2
<b>Antibody Form</b>	Liquid
<b>Appearance</b>	Colorless liquid
<b>Handling</b>	The antibody solution should be gently mixed before use
<b>Reconstitution &amp; Storage</b>	-20°C
<b>Background Descriptions</b>	
<b>Precautions</b>	Anti-GPT2/ALT2 Antibody is for research use only and not for use in diagnostic or therapeutic procedures.

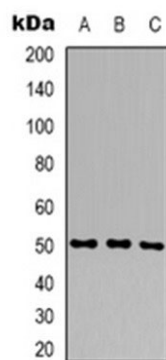
## Protein Information

---

<b>Name</b>	GPT2
<b>Synonyms</b>	AAT2, ALT2
<b>Function</b>	Catalyzes the reversible transamination between alanine and 2-oxoglutarate to form pyruvate and glutamate.
<b>Tissue Location</b>	Expressed at high levels in muscle, adipose tissue, kidney and brain and at lower levels in the liver and breast

## Images

---



WB analysis of ALT2 expression in SHSY5Y (A); HepG2 (B); HEK293T (C) whole cell lysates

Please note: All products are 'FOR RESEARCH USE ONLY. NOT FOR USE IN DIAGNOSTIC OR THERAPEUTIC PROCEDURES'.