

Anti-GOT2 Antibody

Catalog # ABV12004

Product Information

Application	WB, FC
Primary Accession	P00505
Reactivity	Human, Mouse
Host	Rabbit
Isotype	Rabbit IgG
Calculated MW	47518

Additional Information

Gene ID	2806
Positive Control	WB: Hela, HepG2, HL-60, Ramos, mouse brain cell line; FC: Ramos cell line
Application & Usage	FC: 1:1000; WB: 1:10 – 1:50
Other Names	Aspartate aminotransferase, mitochondrial, mAspAT, Fatty acid-binding protein, FABP-1, Glutamate oxaloacetate transaminase 2, Kynurenine aminotransferase 4, Kynurenine aminotransferase IV, Kynurenine--oxoglutarate transaminase 4, Kynurenine--oxoglutarate transaminase IV, Plasma membrane-associated fatty acid-binding protein, FABPpm, Transaminase A, GOT2
Target/Specificity	GOT2
Antibody Form	Liquid
Appearance	Colorless liquid
Handling	The antibody solution should be gently mixed before use
Reconstitution & Storage	-20°C
Background Descriptions	
Precautions	Anti-GOT2 Antibody is for research use only and not for use in diagnostic or therapeutic procedures.

Protein Information

Name	GOT2 (HGNC:4433)
Function	Catalyzes the irreversible transamination of the L-tryptophan metabolite L-kynurenine to form kynurenic acid (KA). As a member of the malate-aspartate shuttle, it has a key role in the intracellular NAD(H) redox balance. Is important for metabolite exchange between mitochondria and cytosol, and for amino acid metabolism. Facilitates cellular uptake of

long-chain free fatty acids.

Cellular Location

Mitochondrion matrix. Cell membrane. Note=Exposure to alcohol promotes translocation to the cell membrane.

Images

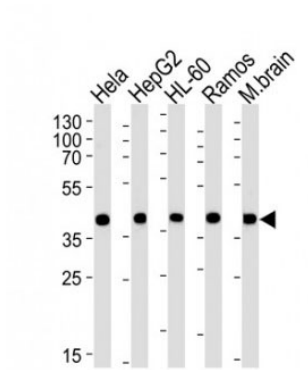


Fig. A. WB analysis of lysates from Hela, HepG2, HL-60, Ramos, mouse brain cell line (from left to right) using GOT2 Antibody

Please note: All products are 'FOR RESEARCH USE ONLY. NOT FOR USE IN DIAGNOSTIC OR THERAPEUTIC PROCEDURES'.