

Anti-PLGF-2 Antibody

Rabbit Polyclonal Antibody

Catalog # ABV12034

Product Information

Application	WB
Primary Accession	P49763
Reactivity	Human
Host	Rabbit
Clonality	Polyclonal
Isotype	Rabbit IgG
Clone Names	N/A
Calculated MW	24789

Additional Information

Gene ID	5228
Application & Usage	WB: recombinant human PLGF-2
Other Names	Placenta growth factor, PlGF, PGF, PGFL, PLGF
Target/Specificity	PGF
Antibody Form	Liquid
Appearance	Colorless liquid
Formulation	In PBS pH 7.2, containing 30% glycerol, 0.5% BSA, 5 mM EDTA and 0.03% proclin.
Handling	The antibody solution should be gently mixed before use.
Reconstitution & Storage	-20 °C
Background Descriptions	
Precautions	Anti-PLGF-2 Antibody is for research use only and not for use in diagnostic or therapeutic procedures.

Protein Information

Name	PGF
Synonyms	PGFL, PLGF
Function	Growth factor active in angiogenesis and endothelial cell growth, stimulating their proliferation and migration. It binds to the receptor FLT1/VEGFR-1.

Isoform PLGF-2 binds NRP1/neuropilin-1 and NRP2/neuropilin-2 in a heparin-dependent manner. Also promotes cell tumor growth.

Cellular Location

Secreted. Note=The three isoforms are secreted but PLGF-2 appears to remain cell attached unless released by heparin

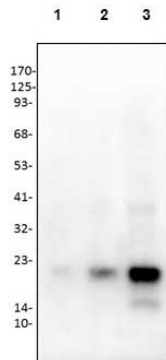
Tissue Location

While the three isoforms are present in most placental tissues, PLGF-2 is specific to early (8 week) placenta and only PLGF-1 is found in the colon and mammary carcinomas

Background

Growth factor active in angiogenesis and endothelial cell growth, stimulating their proliferation and migration. It binds to the receptor FLT1/VEGFR-1. Isoform PLGF-2 binds NRP1/neuropilin-1 and NRP2/neuropilin-2 in a heparin-dependent manner. Also promotes cell tumor growth.

Images



Western blot of human PLGF-2 antibody: Lane 1: human PLGF-2 10 ng Lane 2: human PLGF-2 50 ng Lane 3: human PLGF-2 200 ng

Please note: All products are 'FOR RESEARCH USE ONLY. NOT FOR USE IN DIAGNOSTIC OR THERAPEUTIC PROCEDURES'.