

Anti- β -Tubulin Antibody (1E1-E8-H4)

Mouse Monoclonal Antibody

Catalog # ABV12065

Product Information

Application	WB, IF
Primary Accession	P07437
Reactivity	Human, Mouse, Rat, Monkey
Host	Mouse
Clonality	Monoclonal
Isotype	Mouse IgG1
Clone Names	1E1-E8-H4
Calculated MW	49671

Additional Information

Gene ID	203068
Application & Usage	WB: COS7, LNCap, MCF7, C2C12, goat intestine, goat skeletal muscle, goat spleen, CHO-k1, COS7, C6, 3T3 and K562 cell lysates; IF: HeLa cells
Other Names	Tubulin beta chain, Tubulin beta-5 chain, TUBB, TUBB5
Target/Specificity	β -Tubulin
Antibody Form	Liquid
Appearance	Colorless liquid
Formulation	In PBS (pH 7.4) containing with 0.02% sodium azide, 0.1mg/ml BSA and 50% glycerol
Handling	The antibody solution should be gently mixed before use.
Reconstitution & Storage	-20 °C
Background Descriptions	
Precautions	Anti- β -Tubulin Antibody (1E1-E8-H4) is for research use only and not for use in diagnostic or therapeutic procedures.

Protein Information

Name	TUBB
Synonyms	TUBB5
Function	Tubulin is the major constituent of microtubules, a cylinder consisting of

laterally associated linear protofilaments composed of alpha- and beta-tubulin heterodimers. Microtubules grow by the addition of GTP-tubulin dimers to the microtubule end, where a stabilizing cap forms. Below the cap, tubulin dimers are in GDP-bound state, owing to GTPase activity of alpha-tubulin.

Cellular Location

Cytoplasm, cytoskeleton

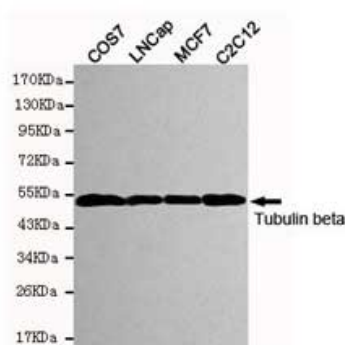
Tissue Location

Ubiquitously expressed with highest levels in spleen, thymus and immature brain.

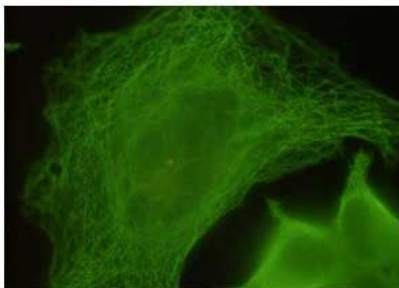
Background

Tubulin is the major constituent of microtubules. It binds two moles of GTP, one at an exchangeable site on the beta chain and one at a non-exchangeable site on the alpha-chain.

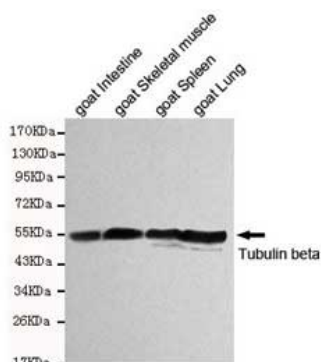
Images



Western blot detection of Tubulin beta in COS7, LNCap, MCF7 and C2C12 cell lysates and using Tubulin beta mouse mAb



immunocytochemistry staining of HeLa cells fixed with 4% paraformaldehyde and using anti-Tubulin beta mouse mAb



Western blot detection of Tubulin beta in goat intestine, goat skeletal muscle, goat spleen and goat lung cell lysates using Tubulin beta mouse mAb

Please note: All products are 'FOR RESEARCH USE ONLY. NOT FOR USE IN DIAGNOSTIC OR THERAPEUTIC PROCEDURES'.