

# CD44

Mouse Monoclonal antibody(Mab)

Catalog # AD80009

## Product Information

---

Application	IHC-P
Primary Accession	<a href="#">P16070</a>
Reactivity	Human
Host	Mouse
Clonality	Monoclonal
Clone Names	344A5C5
Calculated MW	81538

## Additional Information

---

Gene ID	960
Gene Name	CD44
Other Names	CD44 antigen, CDw44, Epican, Extracellular matrix receptor III, ECMR-III, GP90 lymphocyte homing/adhesion receptor, HUTCH-I, Heparan sulfate proteoglycan, Hermes antigen, Hyaluronate receptor, Phagocytic glycoprotein 1, PGP-1, Phagocytic glycoprotein I, PGP-I, CD44, CD44, LHR, MDU2, MDU3, MIC4
Dilution	IHC-P~~Ready-to-use
Storage	Maintain refrigerated at 2-8°C.
Precautions	CD44 Antibody is for research use only and not for use in diagnostic or therapeutic procedures.

## Protein Information

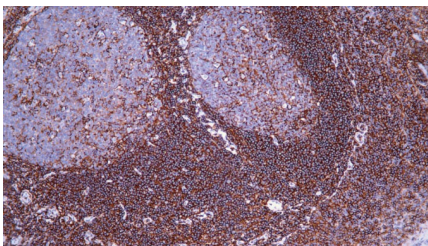
---

Name	CD44
Synonyms	LHR, MDU2, MDU3, MIC4
Function	Cell-surface receptor that plays a role in cell-cell interactions, cell adhesion and migration, helping them to sense and respond to changes in the tissue microenvironment (PubMed: <a href="#">16541107</a> , PubMed: <a href="#">19703720</a> , PubMed: <a href="#">22726066</a> ). Participates thereby in a wide variety of cellular functions including the activation, recirculation and homing of T-lymphocytes, hematopoiesis, inflammation and response to bacterial infection (PubMed: <a href="#">7528188</a> ). Engages, through its ectodomain, extracellular matrix components such as hyaluronan/HA, collagen, growth factors, cytokines or proteases and serves as a platform for signal transduction by assembling, via its cytoplasmic domain, protein complexes containing receptor kinases and membrane proteases (PubMed: <a href="#">18757307</a> , PubMed: <a href="#">23589287</a> ). Such effectors include PKN2, the RhoGTPases RAC1 and RHOA, Rho-kinases and

	phospholipase C that coordinate signaling pathways promoting calcium mobilization and actin-mediated cytoskeleton reorganization essential for cell migration and adhesion (PubMed: <a href="#">15123640</a> ).
<b>Cellular Location</b>	Cell membrane; Single-pass type I membrane protein. Cell projection, microvillus {ECO:0000250 UniProtKB:P15379}. Secreted Note=Colocalizes with actin in membrane protrusions at wounding edges Co-localizes with RDX, EZR and MSN in microvilli. Localizes to cholesterol-rich membrane-bound lipid raft domains {ECO:0000250 UniProtKB:P15379, ECO:0000269 PubMed:23589287}
<b>Tissue Location</b>	Detected in fibroblasts and urine (at protein level) (PubMed:25326458, PubMed:36213313, PubMed:37453717). Detected in placenta (at protein level) (PubMed:32337544). Isoform 10 (epithelial isoform) is expressed by cells of epithelium and highly expressed by carcinomas. Expression is repressed in neuroblastoma cells

## Images

---



扁桃体

Please note: All products are 'FOR RESEARCH USE ONLY. NOT FOR USE IN DIAGNOSTIC OR THERAPEUTIC PROCEDURES'.