

CD68

Rabbit Monoclonal antibody(Mab)

Catalog # AD80014

Product Information

Application	IHC-P
Primary Accession	P34810
Reactivity	Human
Host	Rabbit
Clonality	Monoclonal
Clone Names	186B1E8
Calculated MW	37408

Additional Information

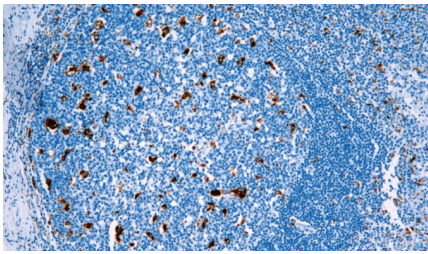
Gene ID	968
Gene Name	CD68
Other Names	Macrosialin, Gp110, CD68, CD68
Dilution	IHC-P~~Ready-to-use
Storage	Maintain refrigerated at 2-8°C.
Precautions	CD68 Antibody is for research use only and not for use in diagnostic or therapeutic procedures.

Protein Information

Name	CD68
Function	Could play a role in phagocytic activities of tissue macrophages, both in intracellular lysosomal metabolism and extracellular cell-cell and cell-pathogen interactions. Binds to tissue- and organ-specific lectins or selectins, allowing homing of macrophage subsets to particular sites. Rapid recirculation of CD68 from endosomes and lysosomes to the plasma membrane may allow macrophages to crawl over selectin-bearing substrates or other cells.
Cellular Location	[Isoform Short]: Cell membrane; Single-pass type I membrane protein
Tissue Location	Highly expressed by blood monocytes and tissue macrophages. Also expressed in lymphocytes, fibroblasts and endothelial cells. Expressed in many tumor cell lines which could allow them to attach to selectins on vascular endothelium, facilitating their dissemination to secondary sites.

Images

Immunohistochemical analysis of paraffin-embedded



human tonsil tissue using AD80014 performed on the Abcarta® FAIP-48 Fully automated IHC platform. Tissue was fixed with formaldehyde at room temperature, antigen retrieval was by heat mediation with a Citrate buffer (pH6. 0). Samples were incubated with primary antibody (Ready-to-use) for 15 min at room temperature. AmpSee™ Detection Systems (Abcepta: ADR005) was used as the secondary antibody.

Please note: All products are 'FOR RESEARCH USE ONLY. NOT FOR USE IN DIAGNOSTIC OR THERAPEUTIC PROCEDURES'.