

# CEA

Mouse Monoclonal antibody(Mab)

Catalog # AD80017

## Product Information

---

Application	IHC-P
Primary Accession	<a href="#">P06731</a>
Reactivity	Human
Host	Mouse
Clonality	Monoclonal
Clone Names	239A2F1
Calculated MW	76796

## Additional Information

---

Gene ID	1048
Gene Name	CEACAM5
Other Names	Carcinoembryonic antigen-related cell adhesion molecule 5, Carcinoembryonic antigen, CEA, Meconium antigen 100, CD66e, CEACAM5, CEA
Dilution	IHC-P~~Ready-to-use
Storage	Maintain refrigerated at 2-8°C.
Precautions	CEA Antibody is for research use only and not for use in diagnostic or therapeutic procedures.

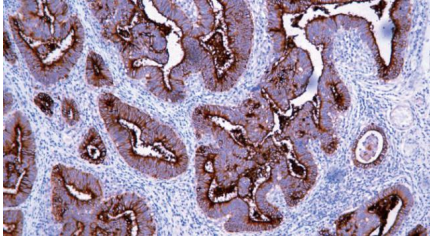
## Protein Information

---

Name	CEACAM5 ( <a href="#">HGNC:1817</a> )
Function	Cell surface glycoprotein that plays a role in cell adhesion, intracellular signaling and tumor progression (PubMed: <a href="#">10864933</a> , PubMed: <a href="#">10910050</a> , PubMed: <a href="#">2803308</a> ). Mediates homophilic and heterophilic cell adhesion with other carcinoembryonic antigen-related cell adhesion molecules, such as CEACAM6 (PubMed: <a href="#">2803308</a> ). Plays a role as an oncogene by promoting tumor progression; induces resistance to anoikis of colorectal carcinoma cells (PubMed: <a href="#">10910050</a> ).
Cellular Location	Cell membrane; Lipid-anchor, GPI-anchor. Apical cell membrane. Cell surface Note=Localized to the apical glycocalyx surface
Tissue Location	Expressed in columnar epithelial and goblet cells of the colon (at protein level) (PubMed:10436421). Found in adenocarcinomas of endodermally derived digestive system epithelium and fetal colon.

## Images

---



结肠癌

Please note: All products are 'FOR RESEARCH USE ONLY. NOT FOR USE IN DIAGNOSTIC OR THERAPEUTIC PROCEDURES'.