

# CK7

Mouse Monoclonal antibody(Mab)

Catalog # AD80019

## Product Information

---

<b>Application</b>	IHC-P
<b>Primary Accession</b>	<a href="#">P08729</a>
<b>Reactivity</b>	Human
<b>Host</b>	Mouse
<b>Clonality</b>	Monoclonal
<b>Clone Names</b>	435D4D6
<b>Calculated MW</b>	51386

## Additional Information

---

<b>Gene ID</b>	3855
<b>Gene Name</b>	KRT7
<b>Other Names</b>	Keratin, type II cytoskeletal 7, Cytokeratin-7, CK-7, Keratin-7, K7, Sarcolectin, Type-II keratin Kb7, KRT7, SCL
<b>Dilution</b>	IHC-P~~Ready-to-use
<b>Storage</b>	Maintain refrigerated at 2-8°C.
<b>Precautions</b>	CK7 Antibody is for research use only and not for use in diagnostic or therapeutic procedures.

## Protein Information

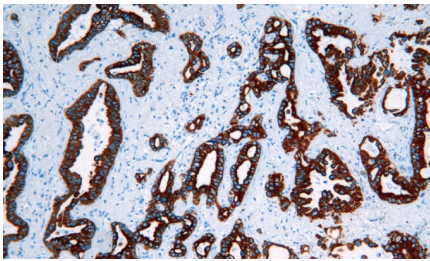
---

<b>Name</b>	KRT7
<b>Synonyms</b>	SCL
<b>Function</b>	Blocks interferon-dependent interphase and stimulates DNA synthesis in cells. Involved in the translational regulation of the human papillomavirus type 16 E7 mRNA (HPV16 E7).
<b>Cellular Location</b>	Cytoplasm.
<b>Tissue Location</b>	Expressed in cultured epidermal, bronchial and mesothelial cells but absent in colon, ectocervix and liver. Observed throughout the glandular cells in the junction between stomach and esophagus but is absent in the esophagus.

## Images

---

肺腺癌



Please note: All products are 'FOR RESEARCH USE ONLY. NOT FOR USE IN DIAGNOSTIC OR THERAPEUTIC PROCEDURES'.