

# CK8

Mouse Monoclonal antibody(Mab)  
Catalog # AD80020

## Product Information

---

<b>Application</b>	IHC-P
<b>Primary Accession</b>	<a href="#">P05787</a>
<b>Reactivity</b>	Human
<b>Host</b>	Mouse
<b>Clonality</b>	Monoclonal
<b>Clone Names</b>	857D4C5
<b>Calculated MW</b>	53704

## Additional Information

---

<b>Gene ID</b>	3856
<b>Gene Name</b>	KRT8
<b>Other Names</b>	Keratin, type II cytoskeletal 8, Cytokeratin-8, CK-8, Keratin-8, K8, Type-II keratin Kb8, KRT8, CYK8
<b>Dilution</b>	IHC-P~~Ready-to-use
<b>Storage</b>	Maintain refrigerated at 2-8°C.
<b>Precautions</b>	CK8 Antibody is for research use only and not for use in diagnostic or therapeutic procedures.

## Protein Information

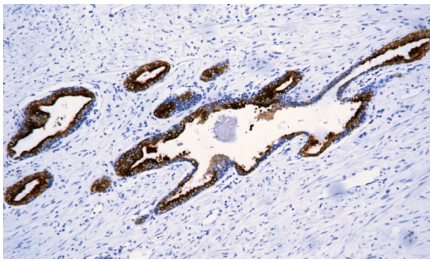
---

<b>Name</b>	KRT8
<b>Synonyms</b>	CYK8
<b>Function</b>	Together with KRT19, helps to link the contractile apparatus to dystrophin at the costameres of striated muscle.
<b>Cellular Location</b>	Cytoplasm. Nucleus, nucleoplasm {ECO:0000250 UniProtKB:Q10758}. Nucleus matrix {ECO:0000250 UniProtKB:Q10758}
<b>Tissue Location</b>	Observed in muscle fibers accumulating in the costameres of myoplasm at the sarcolemma membrane in structures that contain dystrophin and spectrin. Expressed in gingival mucosa and hard palate of the oral cavity.

## Images

---

前列腺癌



Please note: All products are 'FOR RESEARCH USE ONLY. NOT FOR USE IN DIAGNOSTIC OR THERAPEUTIC PROCEDURES'.