

CK20

Rabbit Monoclonal antibody(Mab)

Catalog # AD80024

Product Information

Application	IHC-P
Primary Accession	P35900
Reactivity	Human
Host	Rabbit
Clonality	Monoclonal
Clone Names	120B1A5
Calculated MW	48487

Additional Information

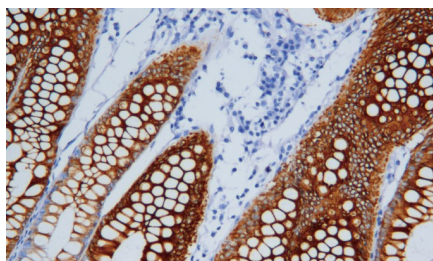
Gene ID	54474
Gene Name	KRT20
Other Names	Keratin, type I cytoskeletal 20, Cytokeratin-20, CK-20, Keratin-20, K20, Protein IT, KRT20
Dilution	IHC-P~~Ready-to-use
Storage	Maintain refrigerated at 2-8°C.
Precautions	CK20 Antibody is for research use only and not for use in diagnostic or therapeutic procedures.

Protein Information

Name	KRT20
Function	Plays a significant role in maintaining keratin filament organization in intestinal epithelia. When phosphorylated, plays a role in the secretion of mucin in the small intestine (By similarity).
Cellular Location	Cytoplasm
Tissue Location	Expressed predominantly in the intestinal epithelium. Expressed in luminal cells of colonic mucosa. Also expressed in the Merkel cells of keratinized oral mucosa; specifically at the tips of some rete ridges of the gingival mucosa, in the basal layer of the palatal mucosa and in the taste buds of lingual mucosa

Images

结肠癌



Please note: All products are 'FOR RESEARCH USE ONLY. NOT FOR USE IN DIAGNOSTIC OR THERAPEUTIC PROCEDURES'.