

# Ep-CAM

Mouse Monoclonal antibody(Mab)  
Catalog # AD80026

## Product Information

---

<b>Application</b>	IHC-P
<b>Primary Accession</b>	<a href="#">P16422</a>
<b>Reactivity</b>	Human
<b>Host</b>	Mouse
<b>Clonality</b>	Monoclonal
<b>Clone Names</b>	215A8G7
<b>Calculated MW</b>	34932

## Additional Information

---

<b>Gene ID</b>	4072
<b>Gene Name</b>	EPCAM
<b>Other Names</b>	Epithelial cell adhesion molecule, Ep-CAM, Adenocarcinoma-associated antigen, Cell surface glycoprotein Trop-1, Epithelial cell surface antigen, Epithelial glycoprotein, EGP, Epithelial glycoprotein 314, EGP314, hEGP314, KS 1/4 antigen, KSA, Major gastrointestinal tumor-associated protein GA733-2, Tumor-associated calcium signal transducer 1, CD326, EPCAM, GA733-2, M1S2, M4S1, MIC18, TACSTD1, TROP1
<b>Dilution</b>	IHC-P~~Ready-to-use
<b>Storage</b>	Maintain refrigerated at 2-8°C.
<b>Precautions</b>	Ep-CAM Antibody is for research use only and not for use in diagnostic or therapeutic procedures.

## Protein Information

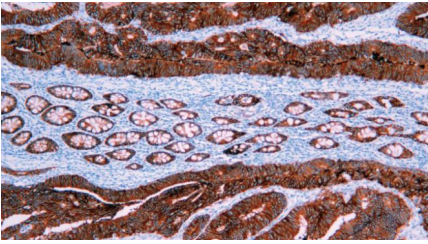
---

<b>Name</b>	EPCAM
<b>Synonyms</b>	GA733-2, M1S2, M4S1, MIC18, TACSTD1, TRO
<b>Function</b>	May act as a physical homophilic interaction molecule between intestinal epithelial cells (IECs) and intraepithelial lymphocytes (IELs) at the mucosal epithelium for providing immunological barrier as a first line of defense against mucosal infection. Plays a role in embryonic stem cells proliferation and differentiation. Up-regulates the expression of FABP5, MYC and cyclins A and E.
<b>Cellular Location</b>	Lateral cell membrane; Single-pass type I membrane protein. Cell junction, tight junction. Note=Colocalizes with CLDN7 at the lateral cell membrane and tight junction
<b>Tissue Location</b>	Highly and selectively expressed by undifferentiated rather than differentiated embryonic stem cells (ESC) Levels rapidly diminish as soon as

ESC's differentiate (at protein levels). Expressed in almost all epithelial cell membranes but not on mesodermal or neural cell membranes. Found on the surface of adenocarcinoma.

## Images

---



结肠癌

Please note: All products are 'FOR RESEARCH USE ONLY. NOT FOR USE IN DIAGNOSTIC OR THERAPEUTIC PROCEDURES'.