

SYN

Mouse Monoclonal antibody(Mab)

Catalog # AD80038

Product Information

Application	IHC-P
Primary Accession	O15061
Reactivity	Human
Host	Mouse
Clonality	Monoclonal
Clone Names	214A4G5
Calculated MW	172868

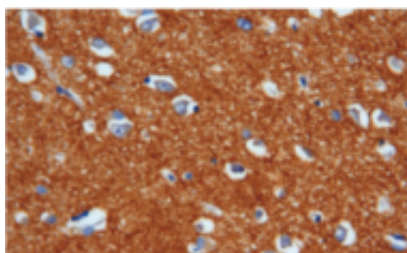
Additional Information

Gene ID	23336
Gene Name	SYP
Other Names	Synemin, Desmuslin, SYNM (HGNC:24466), DMN, KIAA0353, SYN
Dilution	IHC-P~~Ready-to-use
Storage	Maintain refrigerated at 2-8°C.
Precautions	Synaptophysin Antibody is for research use only and not for use in diagnostic or therapeutic procedures.

Protein Information

Name	SYNM (HGNC:24466)
Synonyms	DMN, KIAA0353, SYN
Function	Type-VI intermediate filament (IF) which plays an important cytoskeletal role within the muscle cell cytoskeleton. It forms heteromeric IFs with desmin and/or vimentin, and via its interaction with cytoskeletal proteins alpha-dystrobrevin, dystrophin, talin-1, utrophin and vinculin, is able to link these heteromeric IFs to adherens-type junctions, such as to the costameres, neuromuscular junctions, and myotendinous junctions within striated muscle cells.
Cellular Location	Cytoplasm, cytoskeleton. Cell junction, adherens junction. Note=There are at least two distinct SYNM subpopulations, one in which SYNM interacts with DES within the Z-lines, and another in which it interacts with both DTNA and DES at the costamere
Tissue Location	Isoform 2 is strongly detected in adult heart, fetal skeletal muscles and fetal heart. Isoform 1 is weakly detected in fetal heart and also in fetal skeletal muscle. Isoform 1 and isoform 2 are detected in adult bladder (at protein level). The mRNA is predominantly expressed in heart and muscle with some expression in brain which may be due to tissue-specific isoforms

Images



脑

Please note: All products are 'FOR RESEARCH USE ONLY. NOT FOR USE IN DIAGNOSTIC OR THERAPEUTIC PROCEDURES'.