

TOP2A

Rabbit Monoclonal antibody(Mab)

Catalog # AD80039

Product Information

Application	IHC-P
Primary Accession	P11388
Reactivity	Human
Host	Rabbit
Clonality	Monoclonal
Clone Names	221B4D2
Calculated MW	174385

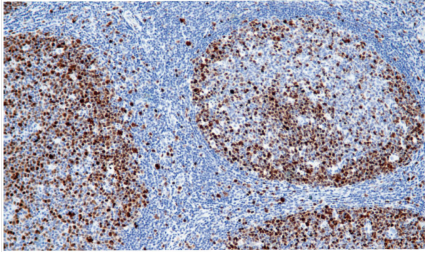
Additional Information

Gene ID	7153
Gene Name	TOP2A
Other Names	DNA topoisomerase 2-alpha, 5.6.2.2 {ECO:0000255 PROSITE-ProRule:PRU00995, ECO:0000269 PubMed:19222228, ECO:0000269 PubMed:19697956}, DNA topoisomerase II, alpha isozyme, TOP2A, TOP2
Dilution	IHC-P~~Ready-to-use
Storage	Maintain refrigerated at 2-8°C.
Precautions	TOP2A Antibody is for research use only and not for use in diagnostic or therapeutic procedures.

Protein Information

Name	TOP2A
Synonyms	TOP2
Function	Key decatenating enzyme that alters DNA topology by binding to two double-stranded DNA molecules, generating a double-stranded break in one of the strands, passing the intact strand through the broken strand, and religating the broken strand (PubMed: 17567603 , PubMed: 18790802 , PubMed: 22013166 , PubMed: 22323612). May play a role in regulating the period length of BMAL1 transcriptional oscillation (By similarity).
Cellular Location	Cytoplasm. Nucleus, nucleoplasm. Nucleus. Nucleus, nucleolus
Tissue Location	Expressed in the tonsil, spleen, lymph node, thymus, skin, pancreas, testis, colon, kidney, liver, brain and lung (PubMed:9155056). Also found in high-grade lymphomas, squamous cell lung tumors and seminomas (PubMed:9155056)

Images



扁桃体

Please note: All products are 'FOR RESEARCH USE ONLY. NOT FOR USE IN DIAGNOSTIC OR THERAPEUTIC PROCEDURES'.