

# WT1

Rabbit Monoclonal antibody(Mab)

Catalog # AD80048

## Product Information

---

Application	IHC-P
Primary Accession	<a href="#">P19544</a>
Reactivity	Human
Host	Rabbit
Clonality	Monoclonal
Clone Names	401B5E7
Calculated MW	49188

## Additional Information

---

Gene ID	7490
Gene Name	WT1
Other Names	Wilms tumor protein, WT33, WT1
Dilution	IHC-P~~Ready-to-use
Storage	Maintain refrigerated at 2-8°C.
Precautions	WT1 Antibody is for research use only and not for use in diagnostic or therapeutic procedures.

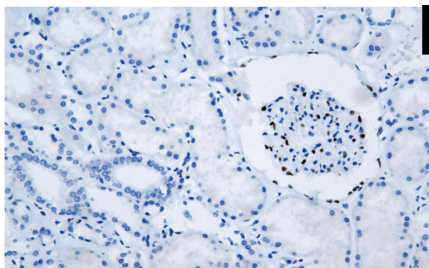
## Protein Information

---

Name	WT1
Function	Transcription factor that plays an important role in cellular development and cell survival (PubMed: <a href="#">7862533</a> ). Recognizes and binds to the DNA sequence 5'-GCG(T/G)GGGCG-3' (PubMed: <a href="#">17716689</a> , PubMed: <a href="#">25258363</a> , PubMed: <a href="#">7862533</a> ). Regulates the expression of numerous target genes, including EPO. Plays an essential role for development of the urogenital system. It has a tumor suppressor as well as an oncogenic role in tumor formation. Function may be isoform-specific: isoforms lacking the KTS motif may act as transcription factors (PubMed: <a href="#">15520190</a> ). Isoforms containing the KTS motif may bind mRNA and play a role in mRNA metabolism or splicing (PubMed: <a href="#">16934801</a> ). Isoform 1 has lower affinity for DNA, and can bind RNA (PubMed: <a href="#">19123921</a> ).
Cellular Location	Nucleus. Nucleus, nucleolus. Cytoplasm. Note=Isoforms lacking the KTS motif have a diffuse nuclear location (PubMed:15520190). Shuttles between nucleus and cytoplasm. {ECO:0000250, ECO:0000269   PubMed:15520190} [Isoform 4]: Nucleus, nucleoplasm
Tissue Location	Expressed in the kidney and a subset of hematopoietic cells

## Images

---



肾脏

Please note: All products are 'FOR RESEARCH USE ONLY. NOT FOR USE IN DIAGNOSTIC OR THERAPEUTIC PROCEDURES'.