

## CD2

Rabbit Monoclonal antibody(Mab)

Catalog # AD80060

### Product Information

---

<b>Application</b>	IHC-P
<b>Primary Accession</b>	<a href="#">P06729</a>
<b>Reactivity</b>	Human
<b>Host</b>	Rabbit
<b>Clonality</b>	Monoclonal
<b>Clone Names</b>	589B9D3
<b>Calculated MW</b>	39448

### Additional Information

---

<b>Gene ID</b>	914
<b>Gene Name</b>	CD2
<b>Other Names</b>	T-cell surface antigen CD2, Erythrocyte receptor, LFA-2, LFA-3 receptor, Rosette receptor, T-cell surface antigen T11/Leu-5, CD2, CD2, SRBC
<b>Dilution</b>	IHC-P~~Ready-to-use
<b>Storage</b>	Maintain refrigerated at 2-8°C.
<b>Precautions</b>	CD2 Antibody is for research use only and not for use in diagnostic or therapeutic procedures.

### Protein Information

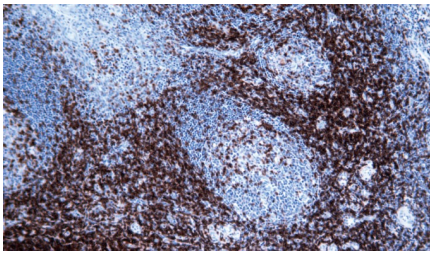
---

<b>Name</b>	CD2
<b>Synonyms</b>	SRBC
<b>Function</b>	CD2 interacts with lymphocyte function-associated antigen CD58 (LFA-3) and CD48/BCM1 to mediate adhesion between T-cells and other cell types. CD2 is implicated in the triggering of T-cells, the cytoplasmic domain is implicated in the signaling function.
<b>Cellular Location</b>	Cell membrane; Single-pass type I membrane protein
<b>Tissue Location</b>	Expressed in natural killer cells (at protein level).

### Images

---

扁桃体



Please note: All products are 'FOR RESEARCH USE ONLY. NOT FOR USE IN DIAGNOSTIC OR THERAPEUTIC PROCEDURES'.