

CD43

Mouse Monoclonal antibody(Mab)

Catalog # AD80063

Product Information

Application	IHC-P
Primary Accession	P16150
Reactivity	Human
Host	Mouse
Clonality	Monoclonal
Clone Names	274F5A9
Calculated MW	40322

Additional Information

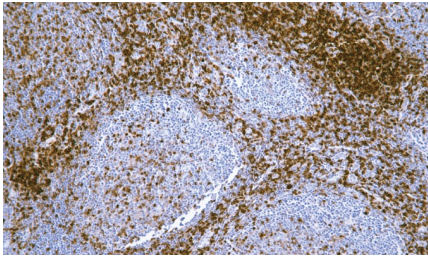
Gene ID	6693
Gene Name	SPN
Other Names	Leukosialin, GPL115, Galactoglycoprotein, GALGP, Leukocyte sialoglycoprotein, Sialophorin, CD43, CD43 cytoplasmic tail, CD43-ct, CD43ct, SPN, CD43
Dilution	IHC-P~~Ready-to-use
Storage	Maintain refrigerated at 2-8°C.
Precautions	CD43 Antibody is for research use only and not for use in diagnostic or therapeutic procedures.

Protein Information

Name	SPN
Synonyms	CD43
Function	Predominant cell surface sialoprotein of leukocytes which regulates multiple T-cell functions, including T-cell activation, proliferation, differentiation, trafficking and migration. Positively regulates T-cell trafficking to lymph-nodes via its association with ERM proteins (EZR, RDX and MSN) (By similarity). Negatively regulates Th2 cell differentiation and predisposes the differentiation of T-cells towards a Th1 lineage commitment. Promotes the expression of IFN-gamma by T-cells during T-cell receptor (TCR) activation of naive cells and induces the expression of IFN-gamma by CD4(+) T-cells and to a lesser extent by CD8(+) T-cells (PubMed: 18036228). Plays a role in preparing T-cells for cytokine sensing and differentiation into effector cells by inducing the expression of cytokine receptors IFNGR and IL4R, promoting IFNGR and IL4R signaling and by mediating the clustering of IFNGR with TCR (PubMed: 24328034). Acts as a major E-selectin ligand responsible for Th17 cell rolling on activated vasculature and recruitment during inflammation.

	Mediates Th17 cells, but not Th1 cells, adhesion to E- selectin. Acts as a T-cell counter-receptor for SIGLEC1 (By similarity).
Cellular Location	Membrane; Single-pass type I membrane protein. Cell projection, microvillus {ECO:0000250 UniProtKB:P13838}. Cell projection, uropodium {ECO:0000250 UniProtKB:P15702}. Note=Localizes to the uropodium and microvilli via its interaction with ERM proteins (EZR, RDX and MSN) {ECO:0000250 UniProtKB:P13838, ECO:0000250 UniProtKB:P15702}
Tissue Location	Cell surface of thymocytes, T-lymphocytes, neutrophils, plasma cells and myelomas

Images



扁桃体

Please note: All products are 'FOR RESEARCH USE ONLY. NOT FOR USE IN DIAGNOSTIC OR THERAPEUTIC PROCEDURES'.