

# CD63

Rabbit Monoclonal antibody(Mab)

Catalog # AD80065

## Product Information

---

<b>Application</b>	IHC-P
<b>Primary Accession</b>	<a href="#">P08962</a>
<b>Reactivity</b>	Human
<b>Host</b>	Rabbit
<b>Clonality</b>	Monoclonal
<b>Clone Names</b>	183B7B1
<b>Calculated MW</b>	25637

## Additional Information

---

<b>Gene ID</b>	967
<b>Gene Name</b>	CD63
<b>Other Names</b>	CD63 antigen, Granulophysin, Lysosomal-associated membrane protein 3, LAMP-3, Lysosome integral membrane protein 1, Limp1, Melanoma-associated antigen ME491, OMA81H, Ocular melanoma-associated antigen, Tetraspanin-30, Tspan-30, CD63, CD63, MLA1, TSPAN30
<b>Dilution</b>	IHC-P~~Ready-to-use
<b>Storage</b>	Maintain refrigerated at 2-8°C.
<b>Precautions</b>	CD63 Antibody is for research use only and not for use in diagnostic or therapeutic procedures.

## Protein Information

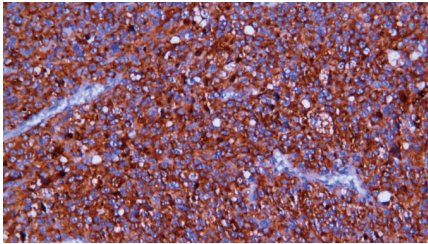
---

<b>Name</b>	CD63
<b>Synonyms</b>	MLA1, TSPAN30
<b>Function</b>	Functions as a cell surface receptor for TIMP1 and plays a role in the activation of cellular signaling cascades. Plays a role in the activation of ITGB1 and integrin signaling, leading to the activation of AKT, FAK/PTK2 and MAP kinases. Promotes cell survival, reorganization of the actin cytoskeleton, cell adhesion, spreading and migration, via its role in the activation of AKT and FAK/PTK2. Plays a role in VEGFA signaling via its role in regulating the internalization of KDR/VEGFR2. Plays a role in intracellular vesicular transport processes, and is required for normal trafficking of the PMEL luminal domain that is essential for the development and maturation of melanocytes. Plays a role in the adhesion of leukocytes onto endothelial cells via its role in the regulation of SELP trafficking. May play a role in mast cell degranulation in response to Ms4a2/FcεRI stimulation, but not in mast cell degranulation in response to other stimuli.

<b>Cellular Location</b>	Cell membrane; Multi-pass membrane protein. Lysosome membrane; Multi-pass membrane protein. Late endosome membrane; Multi-pass membrane protein. Endosome, multivesicular body. Melanosome. Secreted, extracellular exosome. Cell surface. Note=Also found in Weibel-Palade bodies of endothelial cells (PubMed:10793155). Located in platelet dense granules (PubMed:7682577). Detected in a subset of pre-melanosomes Detected on intraluminal vesicles (ILVs) within multivesicular bodies (PubMed:21962903).
<b>Tissue Location</b>	Detected in platelets (at protein level). Dysplastic nevi, radial growth phase primary melanomas, hematopoietic cells, tissue macrophages.

## Images

---



恶性黑色素瘤

Please note: All products are 'FOR RESEARCH USE ONLY. NOT FOR USE IN DIAGNOSTIC OR THERAPEUTIC PROCEDURES'.