

ESA

Mouse Monoclonal antibody(Mab)

Catalog # AD80074

Product Information

Application	IHC-P
Primary Accession	Q14254
Reactivity	Human
Host	Mouse
Clonality	Monoclonal
Clone Names	748A4F4
Calculated MW	47064

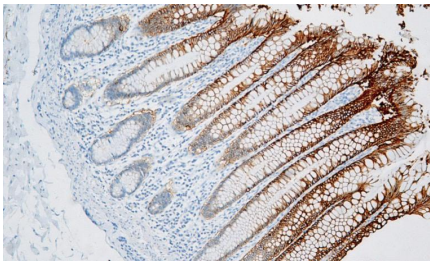
Additional Information

Gene ID	2319
Gene Name	FLOT2
Other Names	Flotillin-2, Epidermal surface antigen, ESA, Membrane component chromosome 17 surface marker 1, FLOT2, ESA1, M17S1
Dilution	IHC-P~~Ready-to-use
Storage	Maintain refrigerated at 2-8°C.
Precautions	ESA Antibody is for research use only and not for use in diagnostic or therapeutic procedures.

Protein Information

Name	FLOT2
Synonyms	ESA1, M17S1
Function	May act as a scaffolding protein within caveolar membranes, functionally participating in formation of caveolae or caveolae-like vesicles. May be involved in epidermal cell adhesion and epidermal structure and function.
Cellular Location	Cell membrane; Peripheral membrane protein. Membrane, caveola; Peripheral membrane protein. Endosome Membrane; Lipid-anchor. Note=Membrane- associated protein of caveolae
Tissue Location	In skin, expressed in epidermis and epidermal appendages but not in dermis. Expressed in all layers of the epidermis except the basal layer. In hair follicles, expressed in the suprabasal layer but not the basal layer. Also expressed in melanoma and carcinoma cell lines, fibroblasts and foreskin melanocytes

Images



Please note: All products are 'FOR RESEARCH USE ONLY. NOT FOR USE IN DIAGNOSTIC OR THERAPEUTIC PROCEDURES'.