

# IgA

Mouse Monoclonal antibody(Mab)

Catalog # AD80081

## Product Information

---

Application	IHC-P
Primary Accession	<a href="#">P01876</a>
Reactivity	Human
Host	Mouse
Clonality	Monoclonal
Clone Names	432F8H3
Calculated MW	42849

## Additional Information

---

Gene Name	IGHA1 {ECO:0000303   PubMed:11340299, ECO:0000303   Ref.11}
Other Names	Immunoglobulin heavy constant alpha 1 {ECO:0000303   PubMed:11340299, ECO:0000303   Ref.13}, Ig alpha-1 chain C region, Ig alpha-1 chain C region BUR, Ig alpha-1 chain C region TRO, IGHAI {ECO:0000303   PubMed:11340299, ECO:0000303   Ref.13}
Dilution	IHC-P~~Ready-to-use
Storage	Maintain refrigerated at 2-8°C.
Precautions	IgA Antibody is for research use only and not for use in diagnostic or therapeutic procedures.

## Protein Information

---

Name	IGHA1 {ECO:0000303   PubMed:11340299, ECO:0000303   Ref.13}
Function	Constant region of immunoglobulin heavy chains. Immunoglobulins, also known as antibodies, are membrane-bound or secreted glycoproteins produced by B lymphocytes. In the recognition phase of humoral immunity, the membrane-bound immunoglobulins serve as receptors which, upon binding of a specific antigen, trigger the clonal expansion and differentiation of B lymphocytes into immunoglobulins- secreting plasma cells. Secreted immunoglobulins mediate the effector phase of humoral immunity, which results in the elimination of bound antigens (PubMed: <a href="#">20176268</a> , PubMed: <a href="#">22158414</a> ). The antigen binding site is formed by the variable domain of one heavy chain, together with that of its associated light chain. Thus, each immunoglobulin has two antigen binding sites with remarkable affinity for a particular antigen. The variable domains are assembled by a process called V-(D)-J rearrangement and can then be subjected to somatic hypermutations which, after exposure to antigen and selection, allow affinity maturation for a particular antigen (PubMed: <a href="#">17576170</a> , PubMed: <a href="#">20176268</a> ).

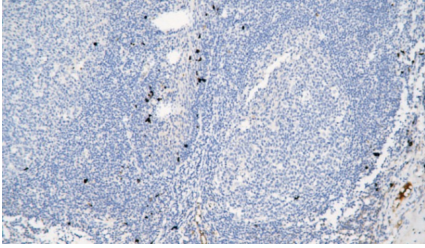
Ig alpha is the major immunoglobulin class in body secretions (PubMed:[2241915](#)).

[Isoform 1]: Secreted

## Cellular Location

## Images

---



扁桃体

Please note: All products are 'FOR RESEARCH USE ONLY. NOT FOR USE IN DIAGNOSTIC OR THERAPEUTIC PROCEDURES'.