

# MBP

Rabbit Monoclonal antibody(Mab)

Catalog # AD80097

## Product Information

---

<b>Application</b>	IHC-P
<b>Primary Accession</b>	<a href="#">P02686</a>
<b>Reactivity</b>	Human
<b>Host</b>	Rabbit
<b>Clonality</b>	Monoclonal
<b>Clone Names</b>	564B1D5
<b>Calculated MW</b>	33117

## Additional Information

---

<b>Gene ID</b>	4155
<b>Gene Name</b>	MBP
<b>Other Names</b>	Myelin basic protein, MBP, Myelin A1 protein, Myelin membrane encephalitogenic protein, MBP
<b>Dilution</b>	IHC-P~~Ready-to-use
<b>Storage</b>	Maintain refrigerated at 2-8°C.
<b>Precautions</b>	Myelin Basic Protein Antibody is for research use only and not for use in diagnostic or therapeutic procedures.

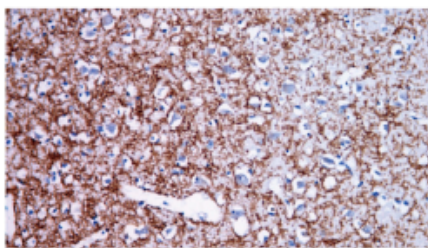
## Protein Information

---

<b>Name</b>	MBP
<b>Function</b>	The classic group of MBP isoforms (isoform 4-isoform 14) are with PLP the most abundant protein components of the myelin membrane in the CNS. They have a role in both its formation and stabilization. The smaller isoforms might have an important role in remyelination of denuded axons in multiple sclerosis. The non-classic group of MBP isoforms (isoform 1-isoform 3/Golli-MBPs) may preferentially have a role in the early developing brain long before myelination, maybe as components of transcriptional complexes, and may also be involved in signaling pathways in T-cells and neural cells. Differential splicing events combined with optional post-translational modifications give a wide spectrum of isomers, with each of them potentially having a specialized function. Induces T-cell proliferation.
<b>Cellular Location</b>	Myelin membrane; Peripheral membrane protein; Cytoplasmic side. Note=Cytoplasmic side of myelin
<b>Tissue Location</b>	MBP isoforms are found in both the central and the peripheral nervous system, whereas Golli-MBP isoforms are expressed in fetal thymus, spleen and spinal cord, as well as in cell lines derived from the immune system.

## Images

---



脑组织

Please note: All products are 'FOR RESEARCH USE ONLY. NOT FOR USE IN DIAGNOSTIC OR THERAPEUTIC PROCEDURES'.