

# Napsin A

Rabbit Monoclonal antibody(Mab)

Catalog # AD80102

## Product Information

---

<b>Application</b>	IHC-P
<b>Primary Accession</b>	<a href="#">O96009</a>
<b>Reactivity</b>	Human
<b>Host</b>	Rabbit
<b>Clonality</b>	Monoclonal
<b>Clone Names</b>	810B1C8
<b>Calculated MW</b>	45387

## Additional Information

---

<b>Gene ID</b>	9476
<b>Gene Name</b>	NAPSA
<b>Other Names</b>	Napsin-A, 3.4.23.-, Aspartyl protease 4, ASP4, Asp 4, Napsin-1, TA01/TA02, NAPSA, NAP1, NAPA
<b>Dilution</b>	IHC-P~~Ready-to-use
<b>Storage</b>	Maintain refrigerated at 2-8°C.
<b>Precautions</b>	Napsin A Antibody is for research use only and not for use in diagnostic or therapeutic procedures.

## Protein Information

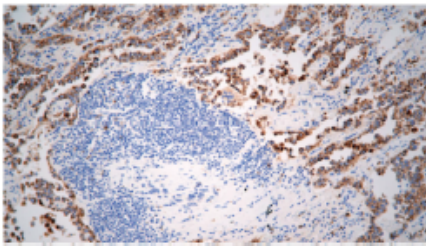
---

<b>Name</b>	NAPSA
<b>Synonyms</b>	NAP1, NAPA
<b>Function</b>	May be involved in processing of pneumocyte surfactant precursors.
<b>Cellular Location</b>	Secreted.
<b>Tissue Location</b>	Expressed predominantly in adult lung (type II pneumocytes) and kidney and in fetal lung. Low levels in adult spleen and very low levels in peripheral blood leukocytes

## Images

---

肺腺癌



Please note: All products are 'FOR RESEARCH USE ONLY. NOT FOR USE IN DIAGNOSTIC OR THERAPEUTIC PROCEDURES'.