

# NSE Antibody

Rabbit Monoclonal Antibody (Mab)

Catalog # AD80105

## Product Information

---

Application	IHC
Primary Accession	<a href="#">P09104</a>
Reactivity	Human
Host	Rabbit
Clonality	Monoclonal
Isotype	IgG
Clone Names	336B3E4
Calculated MW	47269

## Additional Information

---

Gene ID	2026
Gene Name	ENO2
Other Names	Gamma-enolase, 4.2.1.11, 2-phospho-D-glycerate hydro-lyase, Enolase 2, Neural enolase, Neuron-specific enolase, NSE, ENO2
Dilution	IHC~~Ready-to-use
Storage	Maintain refrigerated at 2-8°C.
Precautions	NSE Antibody is for research use only and not for use in diagnostic or therapeutic procedures.

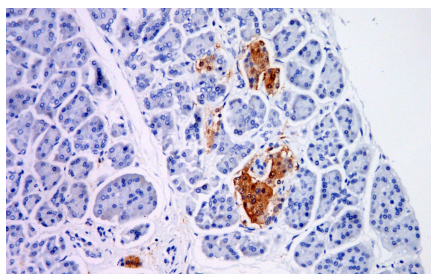
## Protein Information

---

Name	ENO2
Function	Has neurotrophic and neuroprotective properties on a broad spectrum of central nervous system (CNS) neurons. Binds, in a calcium- dependent manner, to cultured neocortical neurons and promotes cell survival (By similarity).
Cellular Location	Cytoplasm. Cell membrane. Note=Can translocate to the plasma membrane in either the homodimeric (alpha/alpha) or heterodimeric (alpha/gamma) form
Tissue Location	The alpha/alpha homodimer is expressed in embryo and in most adult tissues. The alpha/beta heterodimer and the beta/beta homodimer are found in striated muscle, and the alpha/gamma heterodimer and the gamma/gamma homodimer in neurons

## Images

---



Immunohistochemical analysis of paraffin-embedded human pancreas tissue using AD80105 performed on the Abcarta® FAIP-48 Fully automated IHC platform. Tissue was fixed with formaldehyde at room temperature, antigen retrieval was by heat mediation with a Citrate buffer (pH6. 0). Samples were incubated with primary antibody (Ready-to-use) for 15 min at room temperature. AmpSee™ Detection Systems (Abcepta: ADR005) was used as the secondary antibody.

Please note: All products are 'FOR RESEARCH USE ONLY. NOT FOR USE IN DIAGNOSTIC OR THERAPEUTIC PROCEDURES'.