

# SDHA Antibody

Mouse Monoclonal Antibody (Mab)  
Catalog # AD80114

## Product Information

---

<b>Application</b>	IHC
<b>Primary Accession</b>	<a href="#">P31040</a>
<b>Reactivity</b>	Human
<b>Host</b>	Mouse
<b>Clonality</b>	Monoclonal
<b>Isotype</b>	IgG
<b>Clone Names</b>	688B3D5

## Additional Information

---

<b>Gene ID</b>	6389
<b>Gene Name</b>	SDHA
<b>Other Names</b>	Succinate dehydrogenase [ubiquinone] flavoprotein subunit, mitochondrial, 1.3.5.1, Flavoprotein subunit of complex II, Fp, SDHA, SDH2, SDHF
<b>Dilution</b>	IHC~~Ready-to-use
<b>Storage</b>	Maintain refrigerated at 2-8°C.
<b>Precautions</b>	SDHA Antibody is for research use only and not for use in diagnostic or therapeutic procedures.

## Protein Information

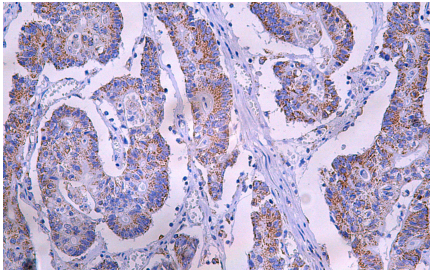
---

<b>Synonyms</b>	SDH2, SDHF
<b>Function</b>	Flavoprotein (FP) subunit of succinate dehydrogenase (SDH) that is involved in complex II of the mitochondrial electron transport chain and is responsible for transferring electrons from succinate to ubiquinone (coenzyme Q) (PubMed: <a href="#">24781757</a> ). Can act as a tumor suppressor (PubMed: <a href="#">20484225</a> ).
<b>Cellular Location</b>	Mitochondrion inner membrane {ECO:0000250 UniProtKB:Q0QF01}; Peripheral membrane protein {ECO:0000250 UniProtKB:Q0QF01}; Matrix side {ECO:0000250 UniProtKB:Q0QF01}

## Images

---

Immunohistochemical analysis of paraffin-embedded colorectal carcinoma; tissue using AD80270 performed on the Abcarta® FAIP-48 Fully automated IHC platform. Tissue was fixed with formaldehyde at room temperature, antigen retrieval was by heat mediation with a Citrate buffer (pH6. 0). Samples were incubated



with primary antibody(Ready-to-use) for 15 min at room temperature. AmpSee™ Detection Systems(Abcepta:ADR005) was used as the secondary antibody.

Please note: All products are 'FOR RESEARCH USE ONLY. NOT FOR USE IN DIAGNOSTIC OR THERAPEUTIC PROCEDURES'.