

CD138

Rabbit Monoclonal antibody(Mab)
Catalog # AD80117

Product Information

Application	IHC-P
Primary Accession	P18827
Reactivity	Human
Host	Rabbit
Clonality	Monoclonal
Clone Names	505B7H1
Calculated MW	32462

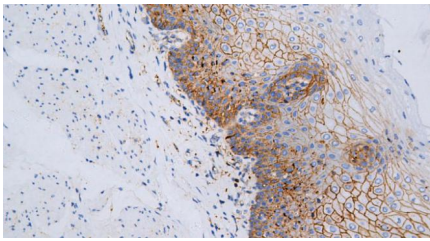
Additional Information

Gene ID	6382
Gene Name	SDC1
Other Names	Syndecan-1, SYND1, CD138, SDC1, SDC
Dilution	IHC-P~~Ready-to-use
Storage	Maintain refrigerated at 2-8°C.
Precautions	CD138 Antibody is for research use only and not for use in diagnostic or therapeutic procedures.

Protein Information

Name	SDC1 (HGNC:10658)
Synonyms	SDC
Function	Cell surface proteoglycan that contains both heparan sulfate and chondroitin sulfate and that links the cytoskeleton to the interstitial matrix (By similarity). Regulates exosome biogenesis in concert with SDCBP and PDCD6IP (PubMed: 22660413). Able to induce its own expression in dental mesenchymal cells and also in the neighboring dental epithelial cells via an MSX1-mediated pathway (By similarity).
Cellular Location	Membrane; Single-pass type I membrane protein. Secreted Secreted, extracellular exosome Note=Shedding of the ectodomain produces a soluble form
Tissue Location	Detected in placenta (at protein level) (PubMed:32337544). Detected in fibroblasts (at protein level) (PubMed:36213313).

Images



Please note: All products are 'FOR RESEARCH USE ONLY. NOT FOR USE IN DIAGNOSTIC OR THERAPEUTIC PROCEDURES'.