

CK10

Mouse Monoclonal antibody(Mab)

Catalog # AD80126

Product Information

Application	IHC-P
Primary Accession	P13645
Reactivity	Human
Host	Mouse
Clonality	Monoclonal
Clone Names	311F8D3
Calculated MW	58827

Additional Information

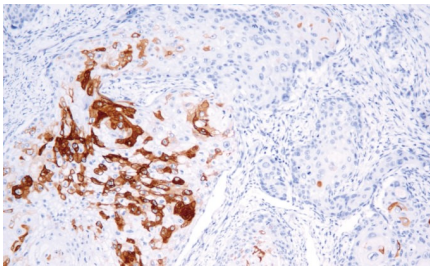
Gene ID	3858
Gene Name	KRT10
Other Names	Keratin, type I cytoskeletal 10, Cytokeratin-10, CK-10, Keratin-10, K10, KRT10, KPP
Dilution	IHC-P~~Ready-to-use
Storage	Maintain refrigerated at 2-8°C.
Precautions	CK10 Antibody is for research use only and not for use in diagnostic or therapeutic procedures.

Protein Information

Name	KRT10
Synonyms	KPP
Function	Plays a role in the establishment of the epidermal barrier on plantar skin (By similarity). Involved in the maintenance of cell layer development and keratin filament bundles in suprabasal cells of the epithelium (By similarity).
Cellular Location	Secreted, extracellular space. Cell surface. Cytoplasm
Tissue Location	Seen in all suprabasal cell layers including stratum corneum. Expressed on the surface of lung cell lines (PubMed:19627498). Localized on the surface of desquamated nasal epithelial cells (at protein level) (PubMed:12427098)

Images

鳞癌



Please note: All products are 'FOR RESEARCH USE ONLY. NOT FOR USE IN DIAGNOSTIC OR THERAPEUTIC PROCEDURES'.