

# Tryptase

Mouse Monoclonal antibody(Mab)

Catalog # AD80134

## Product Information

---

Application	IHC-P
Primary Accession	<a href="#">Q15661</a>
Reactivity	Human
Host	Mouse
Clonality	Monoclonal
Clone Names	668E1F9
Calculated MW	30515

## Additional Information

---

Gene ID	7177
Gene Name	TPSAB1
Other Names	Tryptase alpha/beta-1, Tryptase-1, 3.4.21.59, Tryptase I, Tryptase alpha-1, TPSAB1, TPS1, TPS2, TPSB1
Dilution	IHC-P~~Ready-to-use
Storage	Maintain refrigerated at 2-8°C.
Precautions	Tryptase Antibody is for research use only and not for use in diagnostic or therapeutic procedures.

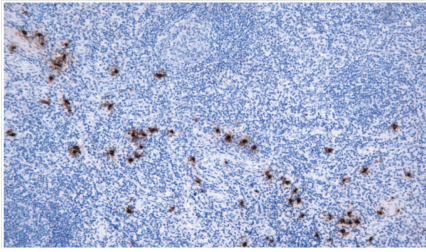
## Protein Information

---

Name	TPSAB1
Synonyms	TPS1, TPS2, TPSB1
Function	Tryptase is the major neutral protease present in mast cells and is secreted upon the coupled activation-degranulation response of this cell type. May play a role in innate immunity. Isoform 2 cleaves large substrates, such as fibronectin, more efficiently than isoform 1, but seems less efficient toward small substrates (PubMed: <a href="#">18854315</a> ).
Cellular Location	Secreted. Note=Released from the secretory granules upon mast cell activation.
Tissue Location	Isoform 1 and isoform 2 are expressed in lung, stomach, spleen, heart and skin; in these tissues, isoform 1 is predominant. Isoform 2 is expressed in aorta, spleen, and breast tumor, with highest levels in the endothelial cells of some blood vessels surrounding the aorta, as well as those surrounding the tumor and low levels, if any, in mast cells (at protein level)

## Images

---



扁桃体

Please note: All products are 'FOR RESEARCH USE ONLY. NOT FOR USE IN DIAGNOSTIC OR THERAPEUTIC PROCEDURES'.