

CK14

Mouse Monoclonal antibody(Mab)

Catalog # AD80138

Product Information

Application	IHC-P
Primary Accession	P02533
Reactivity	Human
Host	Mouse
Clonality	Monoclonal
Clone Names	129F6G3
Calculated MW	51561

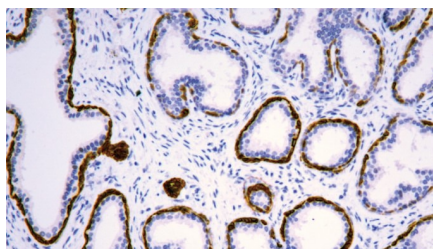
Additional Information

Gene ID	3861
Gene Name	KRT14
Other Names	Keratin, type I cytoskeletal 14, Cytokeratin-14, CK-14, Keratin-14, K14, KRT14
Dilution	IHC-P~~Ready-to-use
Storage	Maintain refrigerated at 2-8°C.
Precautions	CK14 Antibody is for research use only and not for use in diagnostic or therapeutic procedures.

Protein Information

Name	KRT14
Function	The nonhelical tail domain is involved in promoting KRT5- KRT14 filaments to self-organize into large bundles and enhances the mechanical properties involved in resilience of keratin intermediate filaments in vitro.
Cellular Location	Cytoplasm. Nucleus. Note=Expressed in both as a filamentous pattern.
Tissue Location	Expressed in the corneal epithelium (at protein level) (PubMed:26758872). Detected in the basal layer, lowered within the more apically located layers specifically in the stratum spinosum, stratum granulosum but is not detected in stratum corneum. Strongly expressed in the outer root sheath of anagen follicles but not in the germinative matrix, inner root sheath or hair (PubMed:9457912). Found in keratinocytes surrounding the club hair during telogen (PubMed:9457912).

Images



Please note: All products are 'FOR RESEARCH USE ONLY. NOT FOR USE IN DIAGNOSTIC OR THERAPEUTIC PROCEDURES'.