

S100

Mouse Monoclonal antibody(Mab)

Catalog # AD80139

Product Information

Application	IHC-P
Primary Accession	P23297
Reactivity	Human
Host	Mouse
Clonality	Monoclonal
Clone Names	503F1E9
Calculated MW	10546

Additional Information

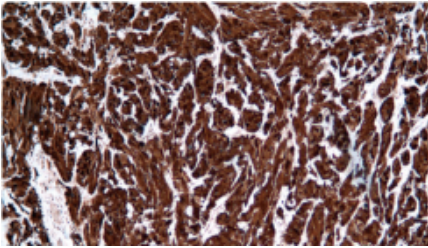
Gene ID	6271
Gene Name	S100A1
Other Names	Protein S100-A1, S-100 protein alpha chain, S-100 protein subunit alpha, S100 calcium-binding protein A1, S100A1, S100A
Dilution	IHC-P~~Ready-to-use
Storage	Maintain refrigerated at 2-8°C.
Precautions	S100 Antibody is for research use only and not for use in diagnostic or therapeutic procedures.

Protein Information

Name	S100A1
Synonyms	S100A
Function	Small calcium binding protein that plays important roles in several biological processes such as Ca(2+) homeostasis, chondrocyte biology and cardiomyocyte regulation (PubMed: 12804600). In response to an increase in intracellular Ca(2+) levels, binds calcium which triggers conformational changes (PubMed: 23351007). These changes allow interactions with specific target proteins and modulate their activity (PubMed: 22399290). Regulates a network in cardiomyocytes controlling sarcoplasmic reticulum Ca(2+) cycling and mitochondrial function through interaction with the ryanodine receptors RYR1 and RYR2, sarcoplasmic reticulum Ca(2+)-ATPase/ATP2A2 and mitochondrial F1-ATPase (PubMed: 12804600). Facilitates diastolic Ca(2+) dissociation and myofilament mechanics in order to improve relaxation during diastole (PubMed: 11717446).
Cellular Location	Cytoplasm. Sarcoplasmic reticulum. Mitochondrion {ECO:0000250 UniProtKB:P56565}
Tissue Location	Highly prevalent in heart (PubMed:12804600, PubMed:1384693). Also found

in lesser quantities in skeletal muscle and brain (PubMed:1384693).

Images



恶性黑色素瘤

Please note: All products are 'FOR RESEARCH USE ONLY. NOT FOR USE IN DIAGNOSTIC OR THERAPEUTIC PROCEDURES'.