

CD1a Antibody

Mouse Monoclonal Antibody (Mab)

Catalog # AD80142

Product Information

Application	IHC
Primary Accession	P06126
Reactivity	Human
Host	Mouse
Clonality	Monoclonal
Isotype	IgG1
Clone Names	772F9F4
Calculated MW	37077

Additional Information

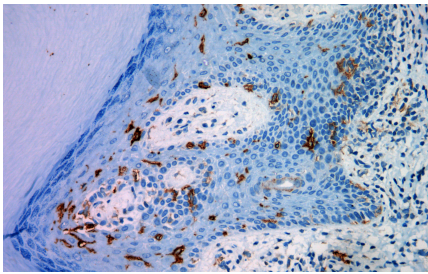
Gene ID	909
Gene Name	CD1A
Other Names	T-cell surface glycoprotein CD1a, T-cell surface antigen T6/Leu-6, hTa1 thymocyte antigen, CD1a, CD1A
Dilution	IHC~~Ready-to-use
Storage	Maintain refrigerated at 2-8°C.
Precautions	CD1a Antibody is for research use only and not for use in diagnostic or therapeutic procedures.

Protein Information

Name	CD1A
Function	Antigen-presenting protein that binds self and non-self lipid and glycolipid antigens and presents them to T-cell receptors on natural killer T-cells.
Cellular Location	Cell membrane; Single-pass type I membrane protein. Membrane raft; Single-pass type I membrane protein. Endosome membrane; Single-pass type I membrane protein. Note=Subject to intracellular trafficking between the cell membrane and endosomes (PubMed:11231314). Localizes to cell surface lipid rafts (PubMed:18178838).
Tissue Location	Expressed on cortical thymocytes, epidermal Langerhans cells, dendritic cells, on certain T-cell leukemias, and in various other tissues.

Images

Immunohistochemical analysis of paraffin-embedded skin tissue using AD80142 performed on the Abcarta®



FAIP-48 Fully automated IHC platform. Tissue was fixed with formaldehyde at room temperature, antigen retrieval was by heat mediation with a EDTA buffer (pH9.0). Samples were incubated with primary antibody (Ready-to-use) for 15 min at room temperature. AmpSee™ Detection Systems (Abcepta: ADR005) was used as the secondary antibody.

Please note: All products are 'FOR RESEARCH USE ONLY. NOT FOR USE IN DIAGNOSTIC OR THERAPEUTIC PROCEDURES'.