

Filaggrin-1

Mouse Monoclonal antibody(Mab)

Catalog # AD80160

Product Information

Application	IHC-P
Primary Accession	P20930
Reactivity	Human
Host	Mouse
Clonality	Monoclonal
Clone Names	451E5G8
Calculated MW	435170

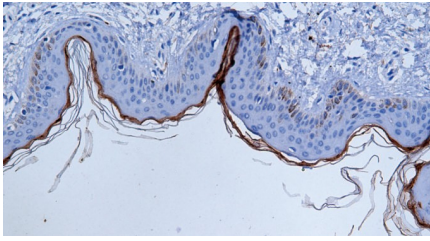
Additional Information

Gene ID	2312
Gene Name	FLG
Other Names	Filaggrin, FLG
Dilution	IHC-P~~Ready-to-use
Storage	Maintain refrigerated at 2-8°C.
Precautions	Filaggrin-1 Antibody is for research use only and not for use in diagnostic or therapeutic procedures.

Protein Information

Name	FLG
Function	Aggregates keratin intermediate filaments and promotes disulfide-bond formation among the intermediate filaments during terminal differentiation of mammalian epidermis.
Cellular Location	Cytoplasmic granule. Note=In the stratum granulosum of the epidermis, localized within keratohyalin granules (PubMed:1429717). In granular keratinocytes and in lower corneocytes, colocalizes with calpain-1/CAPN1 (PubMed:21531719).
Tissue Location	Expressed in skin, thymus, stomach, tonsils, testis, placenta, kidney, pancreas, mammary gland, bladder, thyroid, salivary gland and trachea, but not detected in heart, brain, liver, lung, bone marrow, small intestine, spleen, prostate, colon, or adrenal gland (PubMed:19384417). In the skin, mainly expressed in stratum granulosum of the epidermis (PubMed:1429717, PubMed:19384417)

Images



皮肤

Please note: All products are 'FOR RESEARCH USE ONLY. NOT FOR USE IN DIAGNOSTIC OR THERAPEUTIC PROCEDURES'.